



# UNITY DESKTOP HELP GUIDE

---

## CONTENTS

1	Introducing Unity.....	5
1.1	System Requirements .....	6
1.1.1	Windows PC Requirements .....	6
1.1.2	Internet & Firewall .....	6
1.1.3	BroadSoft Platform Requirements.....	7
1.2	Service Assignment Requirements.....	7
1.2.1	Client Call Control.....	7
1.2.2	Optional Services.....	8
2	Initial Setup .....	9
2.1	Manual and Auto Updates .....	10
2.2	Rollback available .....	11
3	Unity Desktop Interface Overview .....	12
3.1	Resizing Unity .....	12
3.2	Maximising and Minimising .....	13
3.3	Using Unity from the System Tray.....	13
3.4	Show Remote Party Phone Number .....	13
3.4.1	Override Contact Name Using Number .....	14
3.5	Summary Toast Notification .....	14
3.5.1	Browser Integration Through Call Detail Popup.....	14
3.5.2	Desktop Integration.....	16
3.6	Browser Screen-Pop.....	16
3.7	Appearance.....	16
3.8	Skins .....	17
4	Main Interface Elements .....	17

4.1	Call Control .....	17
4.2	Active Call Window .....	17
4.3	Contacts [Busy Lamp Field] .....	18
4.4	Call Logs .....	18
4.5	Voicemail .....	18
5	Call Control .....	19
5.1	Making a Call .....	19
5.1.1	Using the Dial Window .....	19
5.1.2	Using the Contacts Panel .....	20
5.1.3	Drag and Drop .....	20
5.1.4	Using Directory Search .....	20
5.1.5	Dialling from the clipboard .....	20
5.2	Answer a Call .....	20
5.3	End a Call .....	21
5.3.1	Redial .....	21
5.4	Send Call to Voicemail .....	21
5.4.1	Retrieving Voicemail Messages via VoiceMail Button .....	21
5.4.2	Retrieving Voicemail Messages via Voicemail tab .....	22
5.5	Transferring a Call .....	22
5.5.1	Announced Transfer .....	22
5.5.1.1	Warm Transfer .....	23
5.5.2	Blind Transfer .....	23
5.5.2.1	Using Contacts Panel Drag and Drop .....	23
5.5.2.2	Using Transfer Button .....	24
5.5.2.3	Using Right Click .....	24
5.5.3	Transfer to Voicemail .....	24
5.5.3.1	Using Contacts Panel Right Click - Voicemail .....	25
5.5.3.2	Using Drag and Drop .....	25
5.5.4	Transfer to Mobile .....	25
5.5.4.1	Using Contacts Panel Right Click - Mobile .....	25
5.5.4.2	Using Drag and Drop .....	25
5.6	Call Hold/Retrieve .....	26
5.6.1	Placing a Call on Hold .....	26
5.6.2	Retrieving a Held Call .....	26

5.7	Conference Calling .....	26
5.7.1	Starting a Conference Call .....	26
5.7.1.1	Adding Multiple Parties.....	27
5.7.2	Ending a Conference Call .....	27
5.7.3	Conference Bridge Integration .....	28
5.8	Call Recording.....	28
5.8.1	Changing the Call Recording Option .....	28
5.8.2	Controlling Call Recording .....	29
6	Active Call Window.....	31
6.1	Managing Multiple Calls.....	31
6.2	Resizing the Active Call Window.....	31
7	Drag and Drop .....	32
7.1	Make a Call to a User or Number .....	32
7.2	Transferring a Call to a User .....	32
7.5	Send to Voicemail.....	32
7.6	Call Control .....	33
7.7	Send New Instant Message.....	33
7.7.1	Add Participant to Existing IM Session .....	34
7.7.2	Transfer Call to IM Participant .....	34
8	Contacts Panel [Busy Lamp Field] .....	35
8.1	Contact Panel Display Options.....	35
8.1.1	Details View .....	35
8.1.2	List View .....	36
8.1.3	Small Icon View.....	36
8.1.4	Tile View .....	36
8.2	User Icons .....	37
8.2.1	User Icon Engaged Tool Tip .....	37
8.2.2	Instant Messaging Availability .....	37
8.3	Managing Monitored Users in the Contacts Panel.....	37
8.5	Performing Call Control Actions in the Contacts Panel.....	38
8.5.1	Call Extension.....	39
8.5.2	Answer This Call [Call Pick-Up] .....	39
8.5.3	Park Call on Extension .....	39
8.5.3.1	Retrieving Parked Calls.....	39

8.5.4	Camp Call on Extension.....	40
8.5.6	Call Mobile.....	40
8.5.7	Transfer Call to Mobile.....	40
8.5.8	Transfer Call to VoiceMail.....	41
8.5.9	Barge into This Call.....	41
8.5.10	Call Extension When Available.....	42
8.5.11	View User Details.....	42
8.5.11.1	Adding Audio Alerts to Monitored Users.....	42
8.5.12	Send Email.....	42
8.5.13	Answer This Call [Call Pick-Up].....	43
9	Instant Messaging.....	43
9.1	Online/Offline Indicator.....	43
9.2	Docking the IM Window.....	44
9.3	Undocking and Redocking IM sessions.....	44
9.4	Sending an Instant Message.....	45
9.5	Overview of IM Window.....	46
9.6	Adding Participants to an Existing IM Session.....	47
9.7	Sending Contact Directory Numbers.....	47
9.8	IM Notification Settings.....	47
9.9	Send IMs to Offline Users.....	48
9.9.1	Logging IM Sessions.....	48
9.10	XMPP Integration.....	49
9.10.1	XMPP Authentication.....	49
9.10.2	Managing XMPP Subscriptions.....	50
9.10.3	Instant Message Priority.....	52
9.10.4	Configuration.....	53
10	Personal Directory.....	53
10.1	Add New Entry.....	54
10.2	Edit Entry.....	54
10.3	Remove Entry.....	54
10.4	Dialling Directory Entry.....	55
10.5	Import Personal Directory.....	55
10.6	Export Personal Directory.....	55
11	Contact Search Directories.....	56

11.1	Loading Directories .....	57
11.2	Contact Search Results Layout .....	57
11.3	Contact Search Settings .....	57
11.3.1	Listing Directories .....	58
11.4	Configuring Outlook Contacts Preferences .....	58
11.5	Third Party Directories .....	59
12	Call Logs .....	60
13	My Status .....	60
13.1	CommPilot Express Profiles .....	61
13.2	Do Not Disturb .....	61
13.3	Call Forward Always .....	62
13.4	Hot-Desk and Flexible seating .....	63
13.5	Remote Office .....	64

## 1 INTRODUCING UNITY

---

Unity is a Microsoft® Windows® based application that enhances the Hosted PBX solution to provide call control, directory integration, instant messaging, and service configuration. Featuring an intuitive icon based interface, Unity provides point and click call control within the familiar desktop environment. Unity improves workgroup collaboration by bringing users closer to each other and simplifying internal and external communication.

### Unity Lite

Features provided;

- Call control
- Directory Search
- User Status [Busy Lamp Field]
- Displays 8 users
- User service configuration
- Outlook Contacts click to dial
- Call pick up
- Call Recording Control
- Hoteling [hot desking] logon/logoff

- VoiceMail tab playback, save, delete voice messages
- Browser click to dial [from Chrome, Edge, Firefox]

## Unity Pro

All Unity Lite features but also including:

- User Status [Busy Lamp Field]
- Displays 30 users
- Meet me Conferencing Moderator Dial in
- Instant Messaging
- Third party database [SQL, LDAP, Active Directory] integration within Directories

## Unity Enterprise

- Unity Connect API integration with third party database applications

### 1.1 System Requirements

#### 1.1.1 Windows PC Requirements

- a. Unity will require approx 20MB of hard drive space on the local machine
- b. By default the install directory is C:\Program Files (x86)\Unity Client
- c. Minimum computer spec: CPU: dual core 3Ghz. Ram: 4GB. Video Card: 256MB onboard RAM. As a general note, the requirements to run Unity Desktop are considerably less than those required to run Windows
- d. Unity can be rolled out as an MSI file, which supports Active Directory group profiles
- e. Unity is only supported on Windows 7, Windows 8.1 and Windows 10
- f. Both 32 and 64-bit versions of Windows are supported. There are no special permissions required to install Unity

#### 1.1.2 Internet & Firewall

Unity requires high-speed internet connectivity [dial-up is not supported] and access to the below locations, which may require firewall rules to be added on the customer premises:

- a. TCP port 2208 to im.unityclient.com
- b. TCP port 2208 to the BroadSoft OCI server
- c. HTTP/HTTPS access to portal.unityclient.com
- d. HTTP/HTTPS access to the BroadSoft XSI server [if call recording or visual voicemail are used]

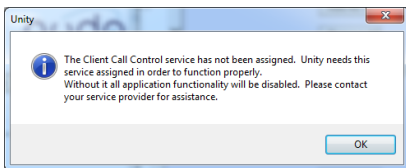
### 1.1.3 BroadSoft Platform Requirements

- a. Unity Desktop is supported on BROADSOFT R17 SP4 and above

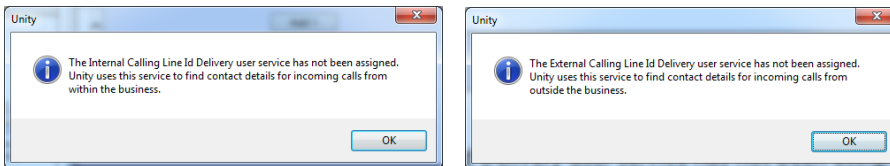
## 1.2 Service Assignment Requirements

### 1.2.1 Client Call Control

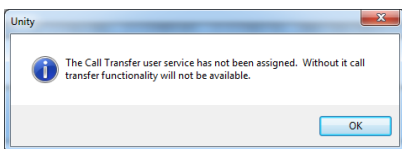
The Client Call Control service is mandatory, as this is the service that allows Unity to integrate with the BroadSoft. If this service is not assigned the user will be alerted and Unity will not provide any functionality.



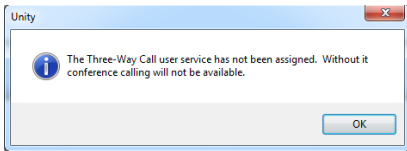
The Internal Calling Line Id Delivery and External Calling Line Id Delivery services should both be assigned as these services allow Unity to identify calls to/from other users in the business. If not assigned Unity will function, but the user will be prompted that this functionality will not be available.



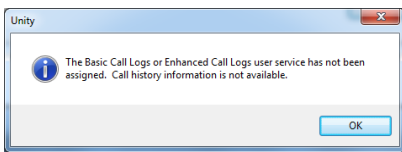
The Call Transfer service is required in order to blind or announce transfer calls to internal and external numbers. Unity will alert the user if this service is not assigned.




Either the Three-Way Calling or N-Way Calling service must be assigned to provide conferencing functionality, Unity will alert the user if neither service is assigned.



Either Basic Call Logs or Enhanced Call Logs must be assigned to the user in order to see dialled, received and missed calls. Unity will alert the user if neither service is assigned.



### 1.2.2 Optional Services

Unity allows many user services to be utilized and configured through the main User Interface (using My Status for example) or through Settings . However, these services are not mandatory, so Unity will remove visibility of them if not assigned to the user. The below services are supported:

Service	Description
<b>Anonymous Call Rejection</b>	Prevent a caller from contacting you if they have explicitly hidden their phone number
<b>Call Forward Always</b>	Automatically forward all incoming calls to a number
<b>Call Forward Busy</b>	Automatically forward all incoming calls to a number when the user is on the phone
<b>Call Forward No Answer</b>	Automatically forward all incoming calls to a number when the call hasn't been answered after a certain number of rings
<b>Call Recording</b>	Record incoming and outgoing calls, refer to section 5.8 for more information
<b>CommPilot Express</b>	Use pre-configured routing profiles to handle incoming calls based on the current state of the user
<b>Do Not Disturb</b>	Block all incoming calls and reroute to voicemail if available
<b>Simultaneous Ring</b>	Automatically ring another number when an incoming call is received, the call can then be answered through that number or the primary phone
<b>Calling Line ID Delivery Blocking</b>	Hide your phone number when making outgoing calls



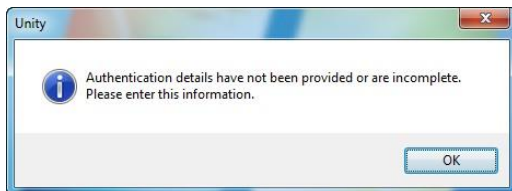
<b>BroadSoft Anywhere</b>	Connect mobile or fixed-line devices to the VoIP account, and switch calls between them
<b>Call Transfer</b>	Transfer calls to internal or external numbers
<b>Call Waiting</b>	Answer an incoming call when already on a call
<b>Call Park Retrieve</b>	Retrieve a call that has been parked for a specific user
<b>Directed Call Pickup With Barge-In</b>	Automatically join another users call
<b>Hoteling Guest</b>	Associate the VoIP account to another device so that it is treated as the primary device. Used in a hot-desking environment.
<b>Remote Office</b>	Associate a mobile device to the VoIP account to make or receive calls
<b>Shared Call Appearance</b>	Control multiple devices for the same VoIP account
<b>Voice Messaging User</b>	Provide voicemail for unanswered incoming calls
<b>External and Internal Calling Line ID Delivery</b>	Provides Calling Line ID information of an incoming call from outside the group

## 2 INITIAL SETUP

---

Unity requires an initial configuration in order to communicate with your service provider's BroadSoft.

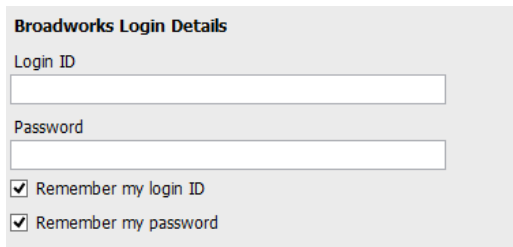
The first-time Unity is started you will be prompted to enter the configuration details, as shown below. Unity can then retain the connection and authentication details for later use.



To do this follow the below steps:

Enter your Login ID and password as specified by your Service Provider. In some cases, the domain may not be required, your service provider will confirm if this is the case. You can also

set Unity to use the same details each time Unity is started, which is the default behaviour and recommended in almost all scenarios. In some situations, [such as in a hot-desk environment where desks & phones are shared by mobile staff members] you may want all users to use the same authentication details, regardless of who is logged into Windows. The “Applies to all users” setting will provide this functionality.



**Broadworks Login Details**

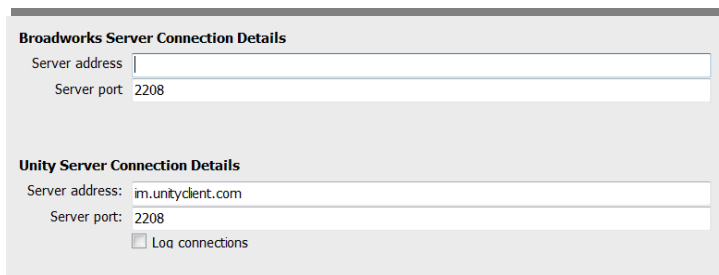
Login ID

Password

Remember my login ID

Remember my password

Now select Connection > Network from the list on the left to confirm the connectivity details, as below.



**Broadworks Server Connection Details**

Server address

Server port 2208

**Unity Server Connection Details**

Server address: im.unityclient.com

Server port: 2208

Log connections

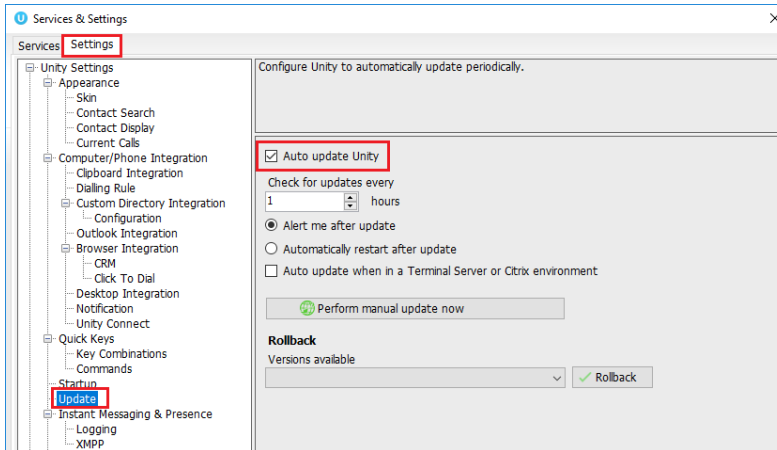
Enter the BroadSoft Server Connection as specified by your Service Provider. In some cases, this will already be supplied in which case it does not need to be changed. The Unity Server address should always be pre-populated, please consult your service provider if this is not the case.

To complete and save your settings click the green tick at bottom right.

Unity will now display a dialogue box “Logging into BroadSoft” as the application opens.

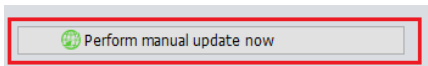
## 2.1 Manual and Auto Updates

Unity can be configured to automatically update when a new version is available. Simply tick the box in settings>update as shown below.



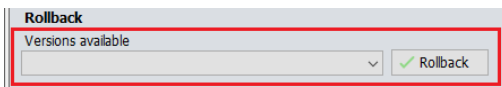
When a new version of Unity is available the user will be presented with a popup asking to restart Unity. Once Unity has restarted the latest version will be running. You can also configure how often Unity looks for updates under the auto update box.

To manually update Unity, click Perform manual update now and Unity will search for any new updates.

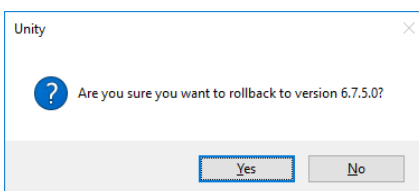


## 2.2 Rollback available

If rollback available is ticked in the Unity portal, then users can rollback to previous versions of Unity. Go to settings>update and the choose the desired version from the drop down menu.



Once you've selected which version you want to rollback to click the green tick and the box below will appear.

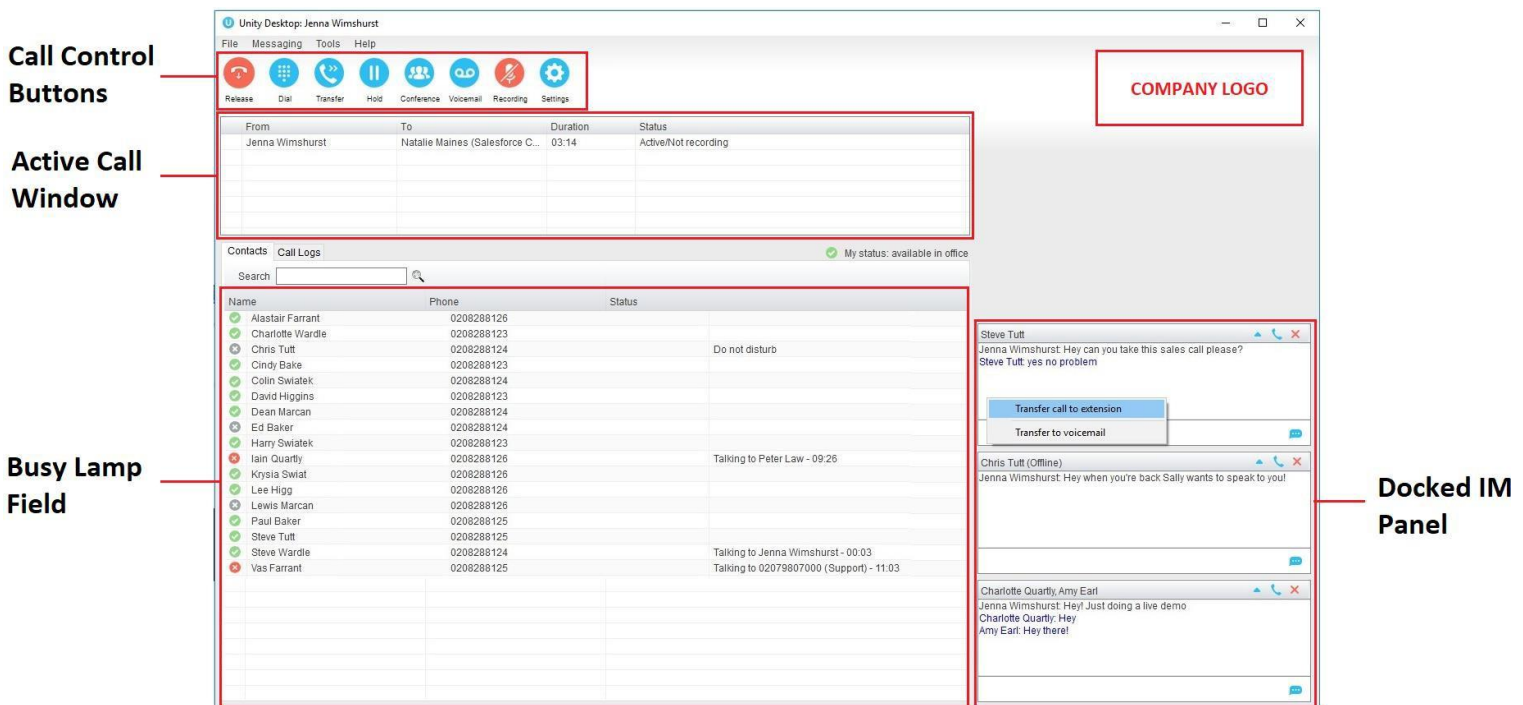


## 3 UNITY DESKTOP INTERFACE OVERVIEW

Unity is split into three functional areas; Call Control buttons, Active Call Window and Contacts [Busy Lamp Field and Instant Messages]. The contacts tab can be toggled to display Call Logs and the Voicemail tab.

The Active Call Window will display the status of all current calls for the logged in user, which are controlled using the Call Control buttons. These call control buttons will change based on the status of the call.


The Busy Lamp Field list will automatically populate with 8 or 30 random users in your group or enterprise when Unity first starts, depending on Unity license assignment.

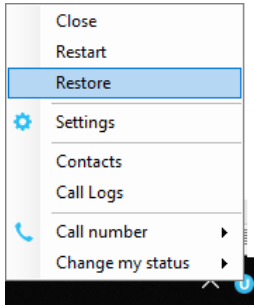


### 3.1 Resizing Unity


Unity can be dragged from the bottom right corner to the required size. The Active Call Window resizes independently by dragging the border at the bottom of the list [where the lower red line is in the illustration above]. When Unity is closed, all current dimensions will be saved.

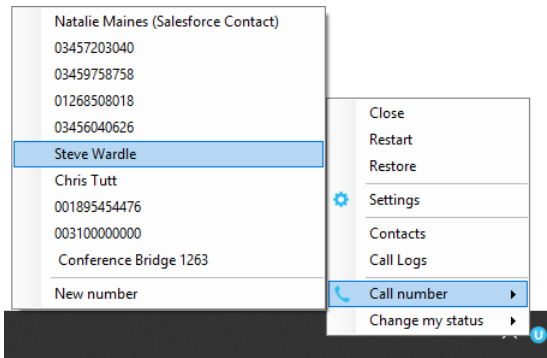
### 3.2 Maximising and Minimising

Unity can be maximised and minimised using the standard buttons in the top right hand corner of the application. When minimised, Unity appears in the system tray in the bottom right hand corner of the desktop where the Unity icon  will be displayed. To re-open Unity simply double click this icon, or right click and select Restore from the menu.



### 3.3 Using Unity from the System Tray

In its minimised state, Unity offers the ability to change My Status profiles, edit Settings & Preferences and make a call. Right click the Unity icon  in the system tray to open the menu and left click to select. When making a call, the last 10 numbers can quickly be selected to redial, as shown below.



### 3.4 Show Remote Party Phone Number

This setting will configure to show the remote party number [if available], as shown below. This applies to both internal and external parties.

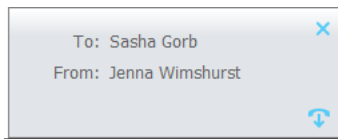
From	To	Duration	Status
Chris Tutt	Andrew Smith (0002)	00:00	Ringing

### 3.4.1 Override Contact Name Using Number

Unity can also perform a contact search based on the remote party number even if the name was provided by the BroadSoft platform, this is especially useful when the name delivered through the PSTN is incorrect, for example in some cases this may always be "WIRELESS CALLER".

## 3.5 Summary Toast Notification

The summary notification is presented for hunt group and DID calls and can be used to route the call to voicemail or answer the call.




Click on the Release button to release the outbound call.

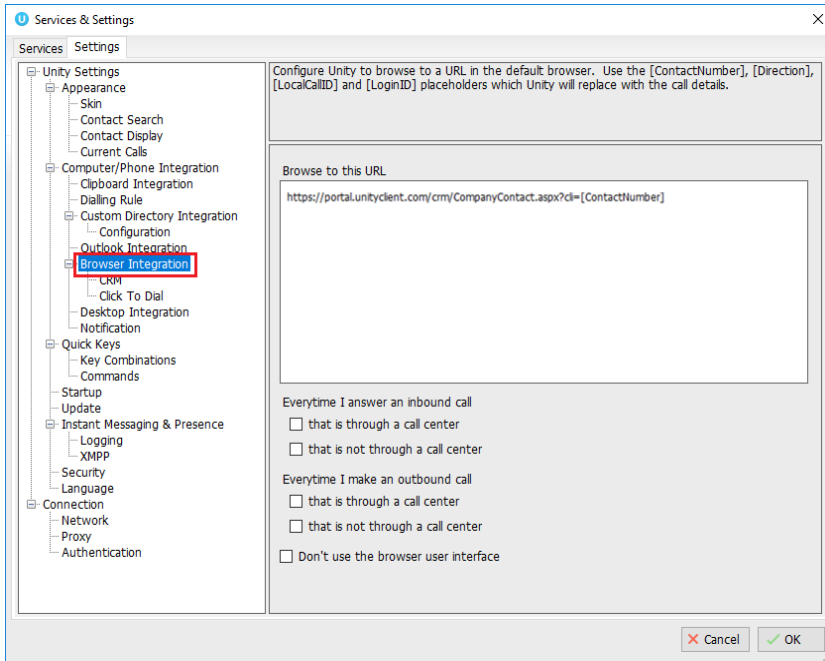


Click on the Answer button to answer the incoming call. Click on the Voicemail button to send the incoming call to voicemail. This button will only be displayed if the voicemail service is assigned and active.

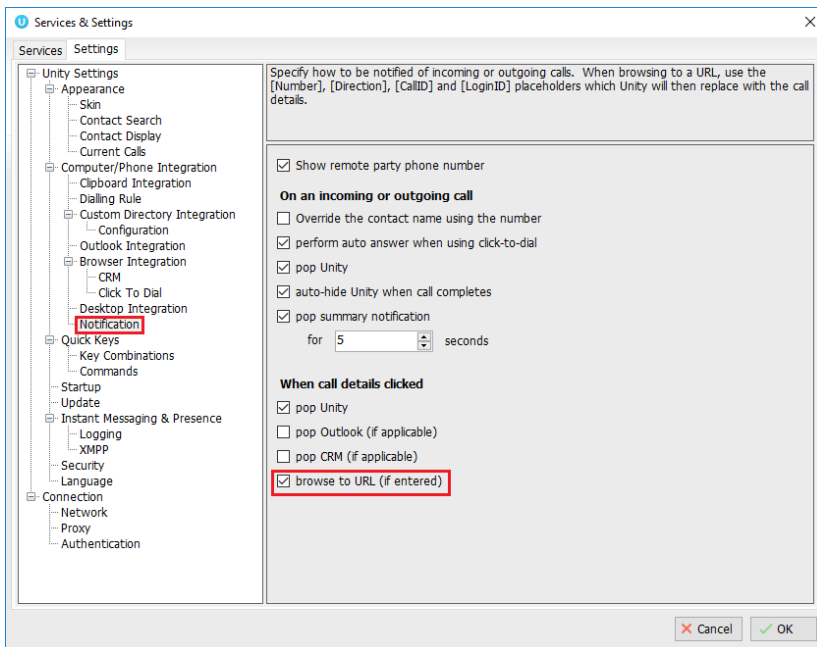
### 3.5.1 Browser Integration Through Call Detail Popup

Unity can be configured to automatically browse to a URL using the default browser when the user clicks on the Call Detail Popup, this applies to both incoming and outgoing calls. The URL will be pre-configured to use delimiters which are then replaced with values relating to the call.

The URL is specified through Settings . First the URL that Unity should browse to must be entered, using special values as placeholders which Unity will then replace with the actual values from the call. You can also set Unity to automatically browse to the URL for certain calls regardless of whether the Call Detail Popup was clicked or not.

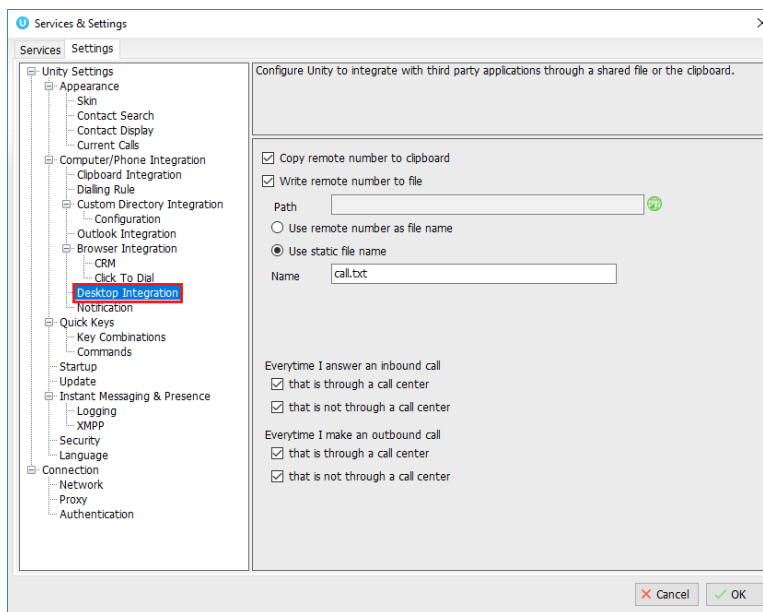


In the above screenshot [ContactNumber] is used as a placeholder that will be replaced with the actual phone number of the remote party. Unity supports many delimiters relating to a call, please speak to your service provider for more information. Once the URL has been entered, Unity can be configured to only browse to that URL when the user clicks the Call Detail Popup, as below.



## 3.5.2 Desktop Integration

Go into Settings > Settings tab > Desktop Integration, as below.



Unity must be configured with the folder location where the file is to be written, you can also specify whether to use the remote number as the filename (for example 02082881248.txt) or to include the remote number in a text file with whatever naming convention you require. Lastly you should instruct Unity when to create the file, for example only when receiving [call center] calls. Please note that Unity will only create the file for an inbound call when the user has answered it.

When you click OK to save, Unity will attempt to create a file called test.txt in the specified folder, then to delete it, which is to test that appropriate folder permissions have been applied. If this fails, Unity will alert the user and the settings will not be saved.

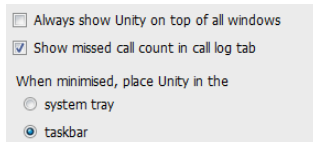
## 3.6 Browser Screen-Pop

The summary notification is also clickable and can be used to open the PC default browser to a preconfigured URL and append incoming call information, such as the phone number of the remote party. This feature can be used for screen popping CRM systems and other browser based applications. Further information on this feature is in a supplementary guide.

## 3.7 Appearance

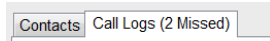
In Settings [button] > Settings [tab] > Appearance, the user can change the behaviour of Unity.





**Always show on top of all windows** – Unity will always be on top

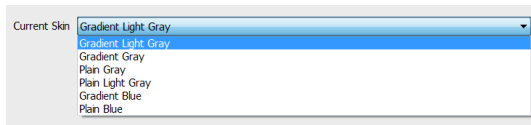
**Show missed call count in the call log tab** – When enabled Unity will provide a count of the number of missed calls as below.



**Show remote party phone number** – This will show the phone number and the name [if matched] in the “From” field

## 3.8 Skins

In Settings [button] > Settings [tab] > Appearance > Skin, the user can change the look of Unity with preset Skins.



# 4 MAIN INTERFACE ELEMENTS

---

## 4.1 Call Control

Call Control buttons provide quick access to common telephone handling commands. Only services that are assigned to the user are displayed. For example, if Call Recording and Voicemail are not assigned then the buttons will not be displayed.

## 4.2 Active Call Window

This provides a list of all current calls and their state. For example, Ringing, Active or On Hold. The duration of the call is also displayed. This is from the moment the call was first placed and does not reset when a call is Held or Retrieved. Unity will mirror any call handling made on the user’s IP phone. For example, if the call is placed on Hold on the handset, the user will show as being on Hold in the Active Call Window.

### 4.3 Contacts [Busy Lamp Field]

This panel will display up to 30 monitored users, displaying their Do Not Disturb [grey], Available [green], Engaged [red] or Ringing [orange] state as icons.

### 4.4 Call Logs

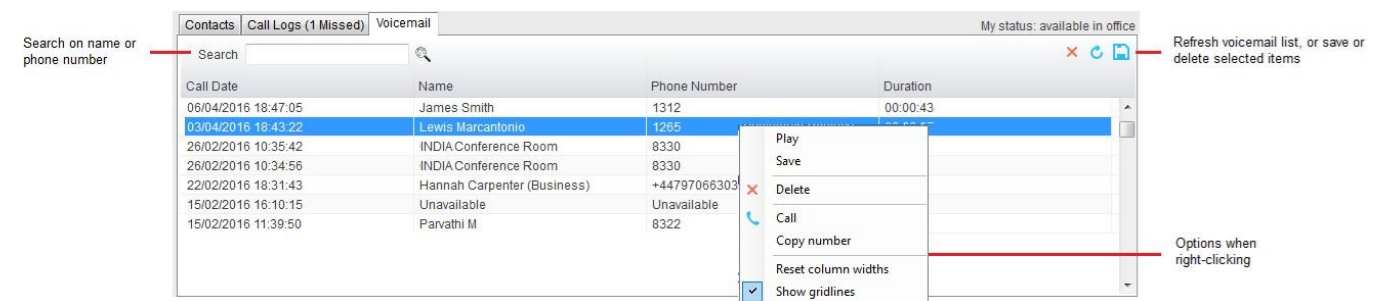
Toggling the bottom Contacts panel to Call Logs will display Missed Calls, Received Calls and Dialed Calls. Missed Calls will include both direct inward DID calls and Hunt Group calls. 20 numbers can be stored unless the user has Enhanced Call Logs service assigned. Drag and drop capability means that you can drag the selected call log up to the Active Call Window to make a new call to the remote number.

Call Logs can also be cleared, reloaded or exported with the icons at top right of the panel.

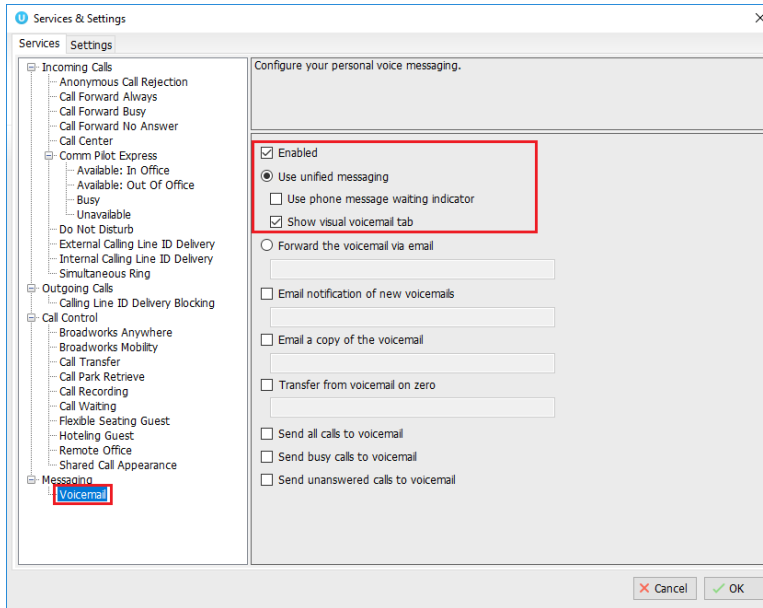


### 4.5 Voicemail



Clicking into the Voicemail tab will display a list of voice messages with the most recent at the top. Double click an entry to play through the PC's default media player. Right click to save locally or delete. Drag and drop capability means that you can drag the selected voicemail up to the Active Call Window to call the remote number.



In order for the Voicemail tab to appear, Desktop must be configured for “Use unified messaging” and “Show visual voicemail tab” in Voicemail settings as below.




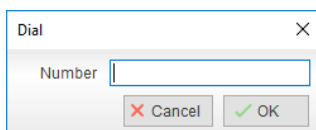
## 5 CALL CONTROL

All calls are managed through the call control buttons at the top of the application. These buttons will change depending on the state of the selected call, or the only call if there is only one call in the Active Call Window. For example, the Answer/Release  and Hold/Retrieve  buttons toggle as only one of these options will be valid at any time. When an inbound call is ringing Answer becomes the valid option. Once the call is active the icon will toggle to Release as hanging up is the only valid option.

### 5.1 Making a Call

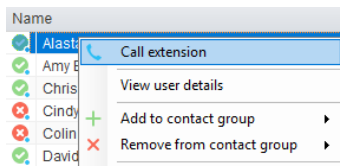
#### 5.1.1 Using the Dial Window

Click the Dial button  to bring up the Dial dialogue box, as shown below. Using the computer keypad enter the desired number and press Enter or click OK to make the call. The desk telephone will default to using hands-free speakerphone. If the telephone does not support speakerphone, you will need to lift the handset when the call is answered.



## 5.1.2 Using the Contacts Panel

Double click a user icon or right click and select “Call extension”



## 5.1.3 Drag and Drop

Right click a user icon on the Contacts panel and drag the icon up to the Active Call Window. This will open a call to that user. Calls dragged onto a monitored user will either be blind transferred or present options depending on the user preferences in Settings and whether the monitored user is engaged or not. For engaged contacts, park, camp-on and transfer to voicemail are available. For available contacts transfer to extension, transfer to mobile, transfer to voicemail or present call hold, camp on and transfer are available.


## 5.1.4 Using Directory Search

Enter the search field in the Contacts panel to dynamically search all internal users and speed dials. Either right click and select “Call extension” or right-click and drag the icon into the Active Call Window to make the call.

## 5.1.5 Dialling from the clipboard


Any number that is copied to the Windows clipboard, (highlight the telephone number, right click, then clicking copy) this will cause a popup toast above the system tray with the option to call the number. Click the toast notification to make the call. This feature can be enabled/disabled in Settings. When a number is copied to the clipboard, Unity can show a prompt to the user which appears over all applications, rather than show a toast notification. This can be configured through Settings>Settings tab>Clipboard Integration.

## 5.2 Answer a Call

When Unity displays an inbound call, click the Answer icon  or double click the call in the Active Call Window to answer the call. Your desk telephone will now be on hands-free speakerphone, if it supports this feature with Unity. If there is an active call in progress, you will need to click the new inbound call in the Active Call Window before clicking Answer, this will

automatically place the first call on Hold. Please note that answering a call by lifting the handset on the desk phone will have the same effect as clicking Answer in Unity.

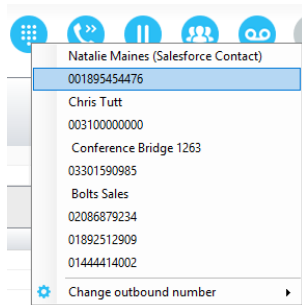
## 5.3 End a Call

Click the Release button  to end the currently selected call. If there are multiple calls in the Active Call Window, make sure you select the right call before clicking Release.


Note: Replacing the telephone handset will also end the call, which will then be removed from the Active Call Window.

### 5.3.1 Redial

You can also right-click the Dial button to see a list of the last 10 dialed numbers. Simply click on an entry to dial the party, as shown below.



## 5.4 Send Call to Voicemail

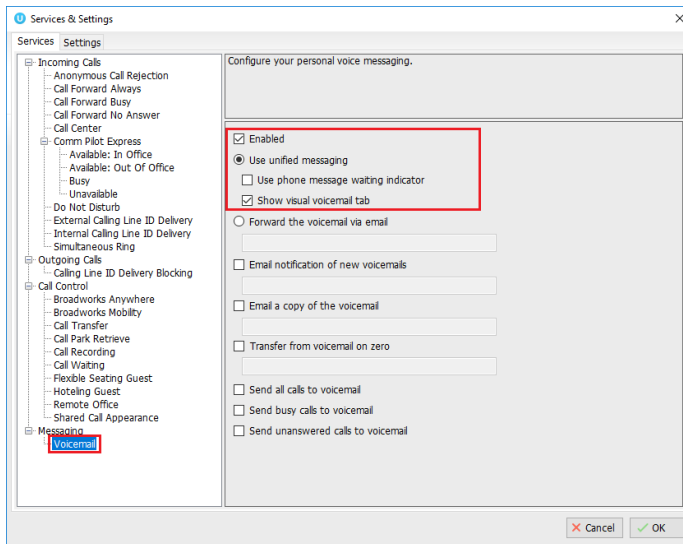
To send an inbound caller directly to your voicemail click the Voicemail button . Please note that if voicemail is not assigned or is disabled, the button will still be visible but inactive.

### 5.4.1 Retrieving Voicemail Messages via VoiceMail Button

When no calls are currently selected, clicking the Voicemail button will dial the user into their voicemail. The phone will default to hands-free speaker phone if it has this capability.

## 5.4.2 Retrieving Voicemail Messages via Voicemail tab


Clicking into the Voicemail tab will display a list of voice messages with the most recent at the top. Double click an entry to play through the PC's default media player. Right click to save locally or delete. In order for the Voicemail tab to appear, the user must be configured for "Use unified messaging" and "Show visual voicemail tab" in Voicemail settings as below.



## 5.5 Transferring a Call

There are two ways to transfer a call; Announced Transfer, where you introduce the call to the receiving party before putting the call through, and Blind Transfer, where you transfer the caller directly to a recipient without introducing the call. Please note that calls can be transferred both to internal users and external contacts.

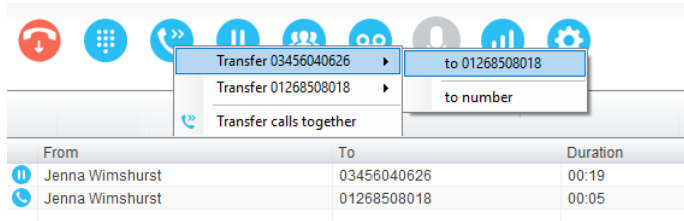
### 5.5.1 Announced Transfer

Receive and answer an inbound call. Make a new call to the desired destination extension or number as described Make a Call above. This will automatically place the first caller on Hold and will open a new call in the Active Call Window. Once the called party answers, click Transfer  and select the context menu option to transfer both calling parties together. Both calls will now disappear from the Active Call Window.

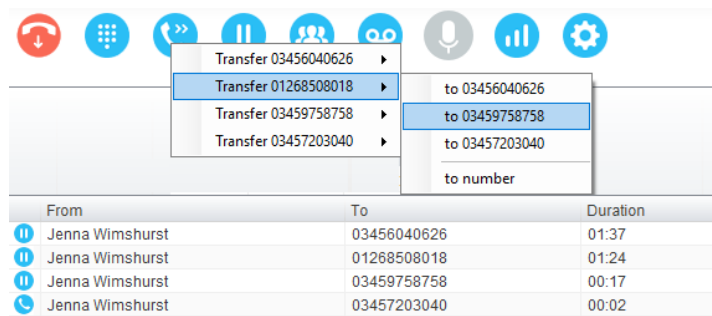
Note: The user is not limiting to transferring received calls. They can make two outbound calls and then use transfer to "bridge" them together.

Calls can also be transferred together by dragging one call on top of another within the Active Call List.

#### Example 1 – Transfer with two live calls

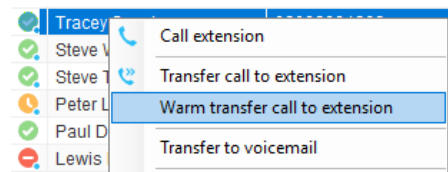


#### Example 2 – Transfer with four live calls



### 5.5.1.1 Warm Transfer

Unity Desktop allows you to warm transfer a call by right clicking the user you want to transfer the call to and selecting “warm transfer” from the context menu. This will then put the original caller on hold and dial the selected number. When ready, click the transfer button in the call control options panel and the two calls will be transferred, automatically disappearing from your active call window.

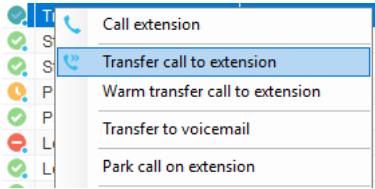


### 5.5.2 Blind Transfer


#### 5.5.2.1 Using Contacts Panel Drag and Drop

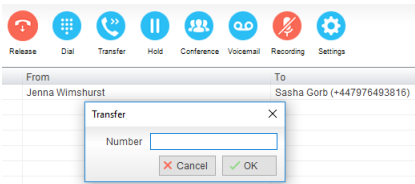
Unity Desktop can be configured to automatically blind transfer a call by dragging the call from the Active Call Window and dropping it on a user icon or number icon in the Contacts panel.

Note: Unity can be configured to display a menu when dropping a call onto a user icon. If no menu options are selected the blind transfer is performed. If menu options are selected, click “Transfer call to extension” to also perform blind transfer. For more information on Drag & drop refer to section 7.



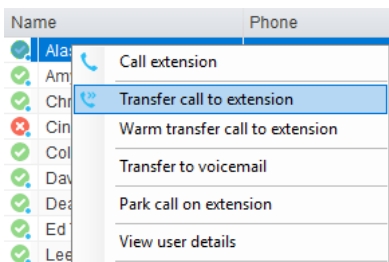
### 5.5.2.2 Using Transfer Button

Once on a call click the Transfer call control button . In the Transfer window enter the destination and click OK.



### 5.5.2.3 Using Right Click

While on an active call right click the recipient icon or number in the Contacts panel or Search. Select “Transfer call to extension” to blind transfer the call.



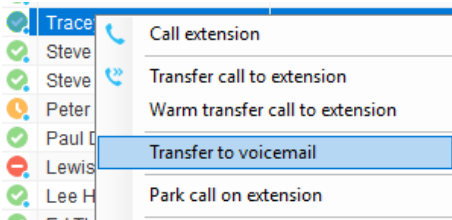
## 5.5.3 Transfer to Voicemail

The option to Transfer to voicemail is valid only for internal company users that have Voicemail assigned and activated.



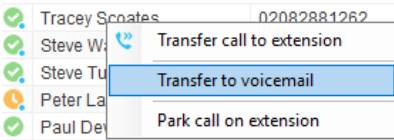
### 5.5.3.1 Using Contacts Panel Right Click - Voicemail

While on an active call, right click a user in the User Status list and select “Transfer to voicemail”. This will send the selected call directly to the destination extension voicemail without introducing ringing.



### 5.5.3.2 Using Drag and Drop


If configured, Unity will display “Transfer to voicemail” in the list when an active call is dragged onto the destination user icon in the Contacts panel. For more information, refer to section 7.



## 5.5.4 Transfer to Mobile

If the destination user has a mobile number entered as part of their profile in BroadSoft, you have the option to right click and select either Dial Mobile [to perform an announced transfer] or Transfer Call to Mobile [to perform blind transfer].

### 5.5.4.1 Using Contacts Panel Right Click - Mobile



Right click the desired user in the Contacts panel. To announce the call, click Dial Mobile. Once the recipient answers click Transfer  and select the context menu option to transfer the calls together.


To blind transfer the call without introduction click Transfer call to mobile.

### 5.5.4.2 Using Drag and Drop


If configured, Unity will display “Transfer to mobile” in the list when an active call is dragged onto the destination user icon in the Contacts panel. For more information, refer to section 7.

## 5.6 Call Hold/Retrieve


The Hold/Retrieve   function toggles depending on the status of the currently selected call. Hold is only available for an active call while Retrieve is only a valid option for a call currently on Hold. When a call is on Hold, the blue Hold icon is shown in miniature to the left of the call in the Active Call Window and the status is On Hold, as shown below.

From	To	Duration	Status
 Jenna Wimshurst	Sasha Gorb	00:04	On hold

### 5.6.1 Placing a Call on Hold

To place a current active call on Hold, press the red Hold button . The call status will now show as on hold in the Active Call Window and there will be an On Hold icon alongside the call.

### 5.6.2 Retrieving a Held Call


Click the held call in the Active Call Window to select it. Click the Retrieve button  to take the call off hold, you can also double click the call to retrieve it. Please note that any other active calls will be placed on hold before the selected call is retrieved, meaning you can toggle between call by double-clicking them in the Active Call Window.


## 5.7 Conference Calling



A conference call can be established with any combination of internal and external numbers. The total number of parties that can be supported is determined by service assignment. The Three-Way Calling user service supports conference calls with two other parties only while the N-Way Calling user service supports conference calls with more participants.

### 5.7.1 Starting a Conference Call



Once an active call is established [that you have either made or received] call a second person.

You can do this by clicking the Dial button  or double clicking a user in the Contacts panel or Search, or Call Log lists. Making this call will automatically place the first caller on Hold.


Once the second party has answered the call, click the Conference button  and a new conference will be created between you and the other two parties. This is represented in the Active Call Window as shown below:



From	To	Duration	Status
 Sasha Gorb	Jenna Wimshurst	00:15	Active (conference)/Not recording
 Jenna Wimshurst	01268508018	00:02	Active (conference)/Not recording

Selecting either call and clicking Hold will place the conference call on hold, during which time the other callers can still talk to each other.


From	To	Duration	Status
 Sasha Gorb	Jenna Wimshurst	00:36	On hold (conference)
 Jenna Wimshurst	01268508018	00:23	On hold (conference)

### 5.7.1.1 Adding Multiple Parties

Once you have a conference established you can add additional parties by calling them. This will place the existing conference on hold. Now click the Conference button . You will be prompted to add the new party to the existing conference as below.


From	To	Duration	Status
 Sasha Gorb	Jenna Wimshurst	01:30	On hold (conference)
 Jenna Wimshurst	01268508018	01:17	On hold (conference)
Jenna Wimshurst	03456040626	00:05	Active/Not recording

Unity

 Do you want to add 03456040626 to the conference?

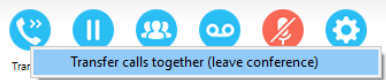
Please note that conference calls can be started with any two remote calls, regardless of the direction of either call or if the number is internal or external [for example between two mobile calls].

### 5.7.2 Ending a Conference Call

To remove a caller from the conference call but continue speaking to the other caller[s], simply select the call to release in the Active Call Window and click the Release button as you 

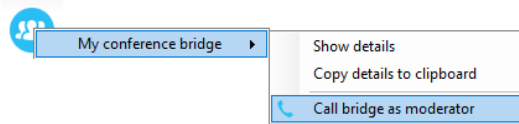
would normally. This will release the selected party and will show only the remaining party[s] in the Active Call Window.

To end a conference call but leave the two remote parties in conversation with each other, click the Transfer button and select the “leave conference” menu option, as shown below.



### 5.7.3 Conference Bridge Integration

Unity allows the user to right click the Conference button to view or copy details of their “reservation less” conference bridge(s), or to call a bridge as a moderator. If this has been configured in BroadWorks.

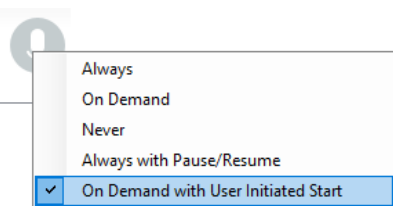


## 5.8 Call Recording

If the Call Recording User service is assigned then the user may be able to manage call recording, although this depends on the functionality offered by the BroadSoft and service configuration parameters. If this service isn't assigned, then the Call Recording button is not displayed in the main window.

### 5.8.1 Changing the Call Recording Option

Right-click the Recording button to select the call recording option, as below. Please note that depending on permissions this may not be available.







Call Recording options are:

Option	Description
<b>Always</b>	Calls are automatically recorded from the beginning of the call. There is no option to pause or stop recording.
<b>On Demand</b>	Calls are not automatically recorded from the start, but recording can be started at any time during the call in which case the entire call will be recorded. Stop and pause are not available with this option.
<b>Never</b>	Calls are never recorded and recording cannot be started while a call is in progress.
<b>Always with Pause/Resume</b>	All calls are automatically recorded from the beginning of the call, but recording can be paused and resumed, which is especially important when taking credit card details over the phone [that need to be omitted]. This will still result in a single recording for the call, regardless of how many times it was paused and resumed.
<b>On Demand with User Initiated Start</b>	Calls are not automatically recorded from the start, but recording can be started at any time. However, any conversation before the recording was started will not be included in the recording. Recording can be paused and resumed, which will result in different recordings being created for a single call.

### 5.8.2 Controlling Call Recording

You can start, stop, pause and resume call recording depending on the Call Recording Option currently selected. Left-click the Recording button to manage recording for the selected call in the Active Call Window will toggle the option depending on the current recording state. The call

recording button will change   to indicate this. When set as Always with Pause/Resume, the user can left click to Pause/Resume and the button will toggle as Resume  [recording] or Pause .

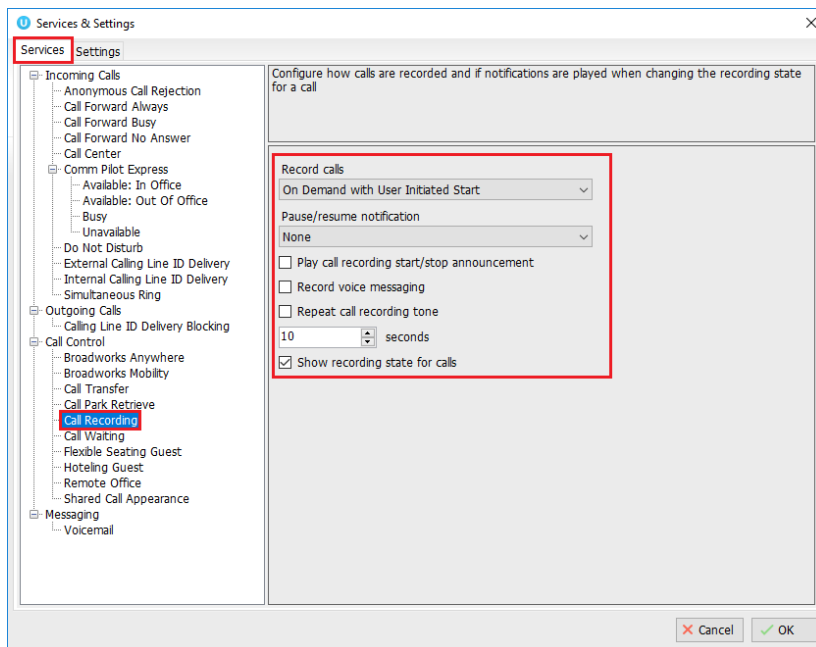
When set as “On Demand With User initiated Start” left clicking the call recording button presents the following menu to allow the user to control the call recording behaviour.

Click the Recording button again to continue/restart recording the call.

The Active Call List will also indicate the recording state of all calls, as shown below.

From	To	Duration	Status
Chris Tutt	Barry Simpson (0003)	00:19	Active/Recording paused

To configure the call recording settings, go to Settings>Services>Call Recording. When configured as “Always with Pause/Resume” or “On Demand with user initiated start”, an announcement can be set to inform both parties that recording has either started or stopped. When the recording is paused or resumed, a beep notification can be played, as shown below.



“Record voice messaging” will dictate whether calls are recorded when a caller leave a voicemail message.

“Repeat call recording tone” will repeat the tone throughout the call, you can configure how often the tone is played from 10 seconds to 30 minutes. By ticking the show recording state for calls box, the state of the recording will be stated in the Active Call Window during a call, as shown below.

From	To	Duration	Status
Jenna Wimshurst	Sally Wainwright	00:08	Active/Recording

From	To	Duration	Status
Jenna Wimshurst	Sally Wainwright	00:48	Active/Recording paused

## 6 ACTIVE CALL WINDOW

---

The Active Call Window gives visual representation of the status of all calls for the logged in user. This includes the caller [From], number called [To], Duration and hold/active/ringing Status. Where the calling number [From] is matched to a contact within a directory [Group/Enterprise, Personal Directory, Outlook etc], the caller name rather than number will be displayed.

From	To	Duration	Status
📞 Jenna Wimshurst	03456040626	00:18	On hold
Jenna Wimshurst	Sasha Gorb	00:00	Ringing

**From** – This field will display the incoming CallerID or the name if it is matched in the Group/Enterprise directory, Personal Contacts or Outlook Contacts.

**To** – This field displays the name of the user or hunt group that has been called ensuring the call can be answered appropriately.

**Duration** – This displays the total time elapsed since the call was first answered. The timer does not restart when the call is placed on hold.

**Status** – This shows the Ringing/Active on On Hold status of each call.

### 6.1 Managing Multiple Calls

To manage a particular call, first select it by clicking it in the Active Call Window. If there is only one call in the list it will be selected automatically. You can then use the call control buttons to perform different actions on the call. There is no limit to the number of calls that can be displayed in the Active Call Window, this is limited by the number of simultaneous calls allowed and if the Call Waiting user service is assigned and active.

You can also double-click an incoming [unanswered] call to answer it, or to retrieve it if currently on hold.



### 6.2 Resizing the Active Call Window

The bottom border of the Active Call Window can be dragged down to display as many or as few calls as necessary. Unity will save these dimensions when closed.

## 7 DRAG AND DROP

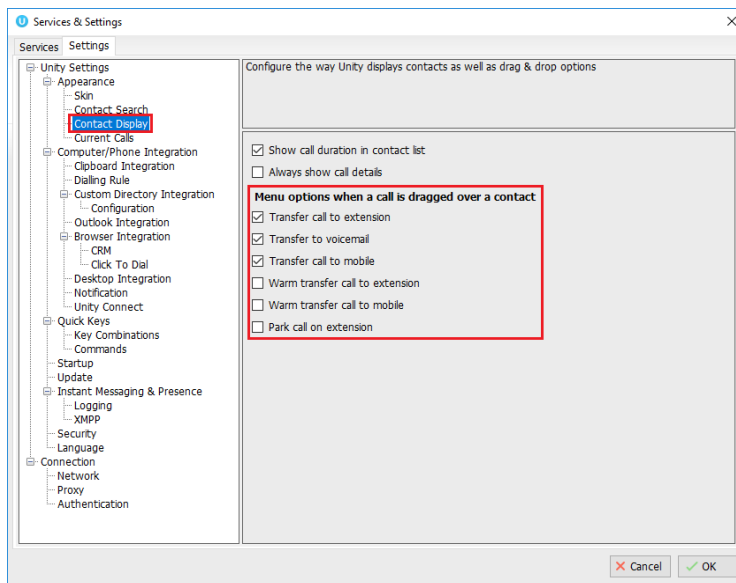
Many common call handling actions can be performed with drag and drop, as well as right click and call control buttons.

### 7.1 Make a Call to a User or Number


Drag a user icon  or contact icon  from the Contacts panel up into the Active Call Window to make a new call to the selected user or number.

### 7.2 Transferring a Call to a User

Drag a live call onto a user to either perform blind transfer, or to populate a drop list with call handling options. The drag and drop behaviour for this action is configured in Settings as shown below.



### 7.5 Send to Voicemail

Dragging an unanswered call from the Active Call Window onto the Voicemail button  will blind transfer the incoming call to your voicemail.

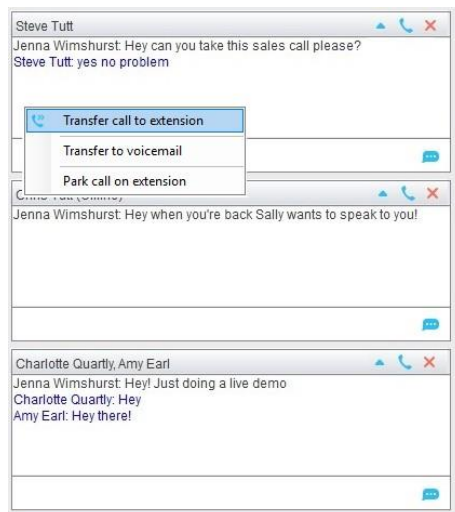
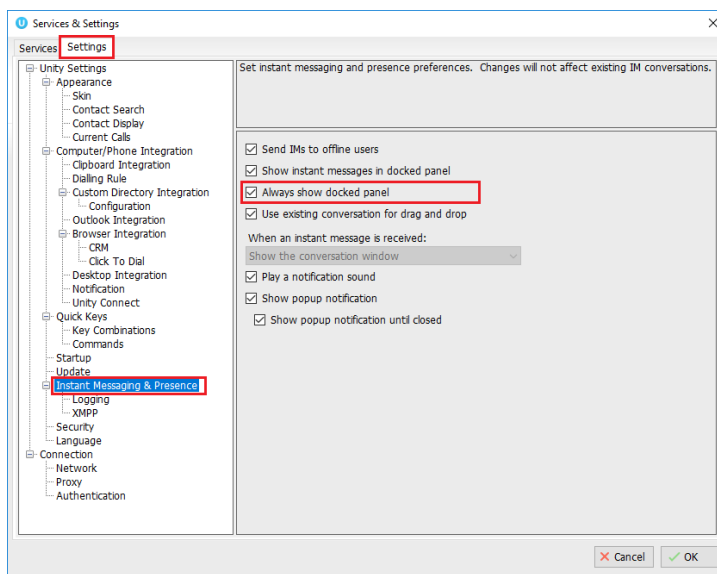


## 7.6 Call Control

Dragging a call over the Hold/Retrieve, Answer/Release, Transfer or park buttons will perform that action on the selected call.

## 7.7 Send New Instant Message

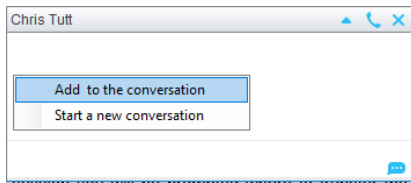
Drag a user to the docked IM window to the right of the Contacts panel to send an IM to that user. This requires that the “Always show docked panel” field is ticked in Settings > Instant Messaging and Presence.



See also section 9 on Instant Messaging.

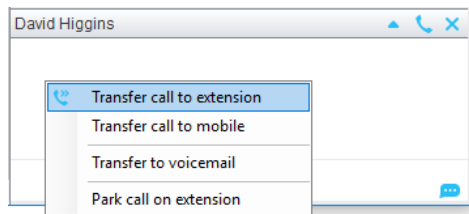
### 7.7.1 Add Participant to Existing IM Session

Drag a user icon onto an existing IM and choose “Add to the conversation”

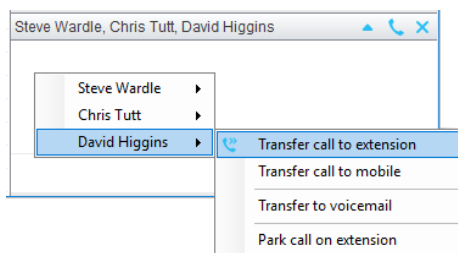


### 7.7.2 Transfer Call to IM Participant

Drag a call from the Active Call Window onto an IM session in the Docked IM Window and you will see a prompt to transfer the call. This is particularly useful if you want to check the recipient's availability before you transfer.



When dropping a call onto a multi-party IM session you will be prompted where to transfer the call.

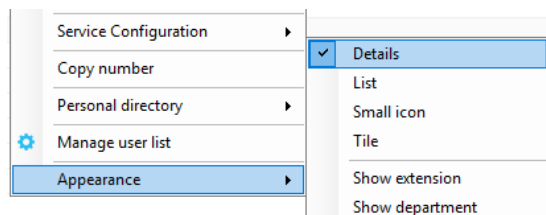


## 8 CONTACTS PANEL [BUSY LAMP FIELD]

The Contacts tab gives a visual indication of the status of users [within the group/enterprise] that are currently being monitoring. A maximum of 30 users can be displayed. Double clicking a monitored user will call them and right clicking will bring up a dynamic options menu.

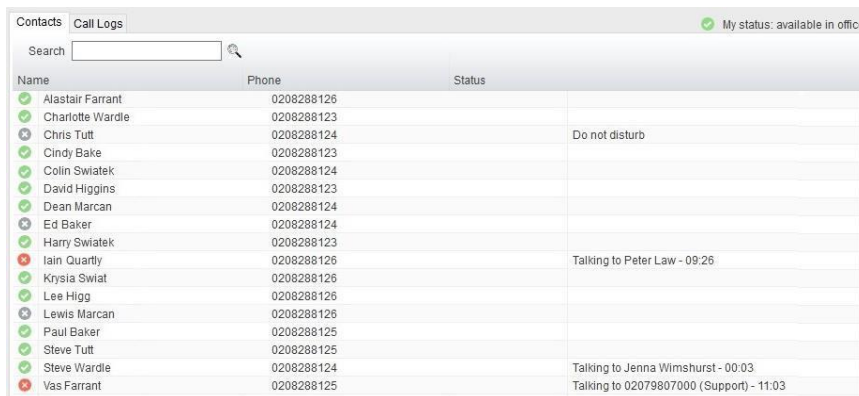
### 8.1 Contact Panel Display Options

There are three different views available, as outlined below. Right-click anywhere in the Contacts panel and select Appearance list to change the view.



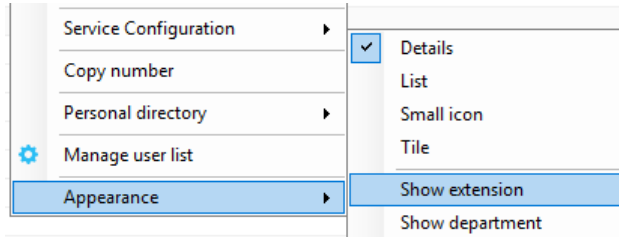
#### 8.1.1 Details View

This view provides by far the greatest amount of detail, but requires more space [although the list can be shortened in which case scrollbars will automatically appear].



Name	Phone	Status
Alastair Farrant	0208288126	
Charlotte Wardle	0208288123	
Chris Tutt	0208288124	Do not disturb
Cindy Bake	0208288123	
Colin Swiatek	0208288124	
David Higgins	0208288123	
Dean Marcan	0208288124	
Ed Baker	0208288124	
Harry Swiatek	0208288123	
Iain Quartly	0208288126	Talking to Peter Law - 09:26
Kryslia Swiat	0208288126	
Lee Higg	0208288126	
Lewis Marcan	0208288126	
Paul Baker	0208288125	
Steve Tutt	0208288125	
Steve Wardle	0208288124	Talking to Jenna Wilmshurst - 00:03
Vas Farrant	0208288125	Talking to 02079807000 (Support) - 11:03

With this view the sort order for each column can be set, which is saved when Unity is closed. You can also configure Unity to display or hide the extension, department and call duration columns.



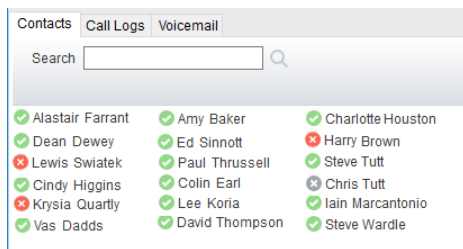
### 8.1.2 List View

This option will display all users in a list.



### 8.1.3 Small Icon View

This view combines a simplified look and space reduction.

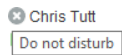


### 8.1.4 Tile View

This view is similar to Icon view but uses more white space to provide a cleaner look.



In both the Icon and Tile views, hovering the mouse over the image will provide more information about the monitored user, for example their service configuration:



## 8.2 User Icons

There are four main user icons states shown in the Contacts panel, regardless of the view chosen.

	Available	The monitored user extension is on hook
	Ringing	The monitored user extension is ringing
	Engaged	The user is on the phone
	Do Not Disturb	The user has selected DND or Unavailable profile

### 8.2.1 User Icon Engaged Tool Tip

Hovering your mouse over an engaged or DND icon will reveal more information about their current state, if available. For engaged users this will include the name or number of the party they are engaged to and the duration off the current call as below [this feature can be disabled for privacy reasons].



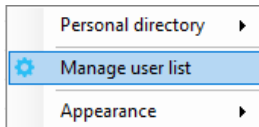
### 8.2.2 Instant Messaging Availability

Regardless of a user's Available/Ringing/Engaged/DND state, if they currently have any version of Unity open they will be available for instant messaging. This is shown by the small blue dot next to the user icon, as per the following examples.

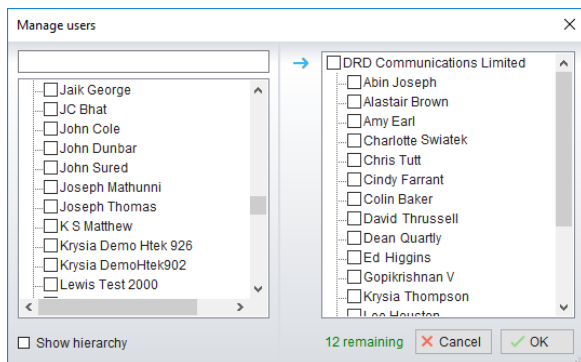
	Ringing. Unity open and available for IM
	DND/Unavailable profile. Unity open and available for IM
	Engaged. Unity open and available for IM
	Available/on-hook. Unity open and available for IM

### 8.3 Managing Monitored Users in the Contacts Panel

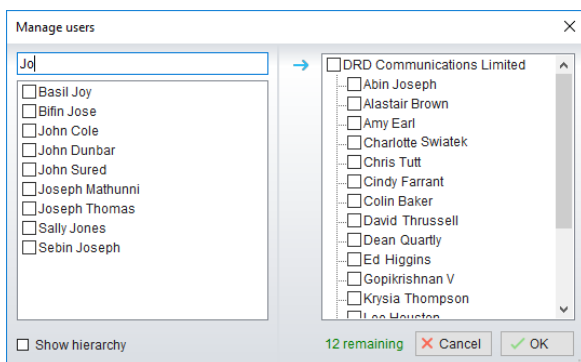
The Contacts panel will display 30 users. In the Contacts panel right click anywhere and click “Manage user list”. This will allow you to choose which users to display.



You will then be able to move users or departments between the lists either by double-clicking them or using the arrow button. All users in the right-side list will be monitored in the Contacts panel. This list is saved when Unity is closed.



The box at top left will dynamically search the group directory.



### 8.5 Performing Call Control Actions in the Contacts Panel

There are many call control functions that can be performed by right-clicking a monitored user in the main Contacts panel or Search. The menu options displayed will dynamically change to only show those available depending on the state of the monitored user and/or the state of the selected call in the Active Call Window [if there is one]. For example, “Transfer to voicemail” will

not be available if the user does not have the voicemail service assigned and “Camp call on extension” will not be available unless there is a live call selected in the Active Call Window.

### 8.5.1 Call Extension

Selecting “Call extension” will open a new call to that user in the same way that double clicking the user icon would. Any current call will automatically be placed on hold. This can be used to make an announced transfer as opposed to a blind transfer using the “Transfer call” commands further down the menu.

### 8.5.2 Answer This Call [Call Pick-Up]

This will perform call pick-up and will pull the call to the ringing user.

*Feature Dependency:*

- I. Monitored user must be ringing [orange icon]
- II. Desktop user and monitored users must be in the same pick-up group

### 8.5.3 Park Call on Extension

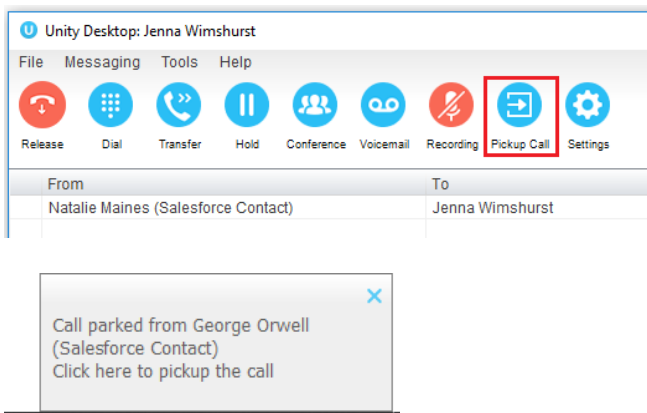
Will park the call on the monitored user’s extension park slot.

*Feature Dependency*

- I. Must have a live call

#### 8.5.3.1 Retrieving Parked Calls

Once a call has been parked onto a user’s extension, their Unity will display a “P” and a toast pop up window will appear. In order for the user to retrieve the parked call they simply need to click either the “P” or the toast pop up. If the call is not retrieved it will be redirected back to the original user who parked the call.



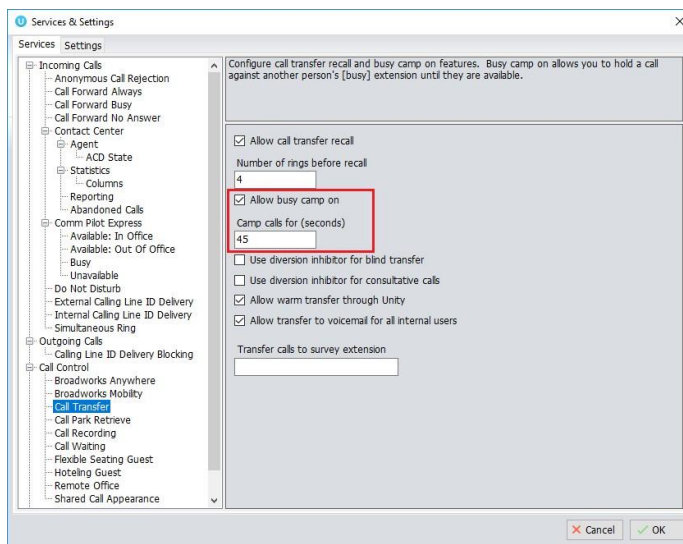
## 8.5.4 Camp Call on Extension

Will camp the call onto the engaged monitored user. When the user goes back on-hook the camped call will be delivered and their phone will start ringing. If the user does not go back on-hook before the camp timer expires the call will return to the Desktop user.

### Feature Dependency

- I. Must have a live call in the Active Call Window
- II. Must be enabled in Settings > Call Transfer as below

The Camp Call option will only be available if activated in Settings > Call Control > Call Transfer as below.



## 8.5.6 Call Mobile

Places call to mobile. Any live call placed on hold.

### Feature Dependency:

The monitored user must have their mobile number entered in BROADSOFT

## 8.5.7 Transfer Call to Mobile

Performs blind transfer call to monitored users mobile.

### Feature Dependency:

- I. The destination user must have their mobile number entered in BROADSOFT
- II. Must have a live call



## 8.5.8 Transfer Call to VoiceMail

Performs blind transfer to the destination user's voicemail.



### *Feature Dependency:*

- I. The destination user must have voicemail service assigned
- II. Must have a live call


## 8.5.9 Barge into This Call

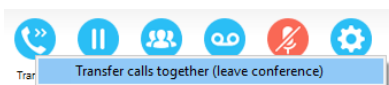
Makes an immediate three-way conference call with the Desktop user, the monitored user and the third party the monitored user is talking to. All parties will be able to talk and hear each other. When attempting to barge into a call, if the phone plays a “number doesn’t exist” tone then this means the monitored user cannot be barged into, because they have the Barge-In Exempt service assigned and activated. Only users without this service active can be barged into.

The Active Call Window will display like a normal conference call, as below, and the Desktop user can Hold/Retrieve the same as for a conference call.

From	To	Duration	Status
 Sasha Gorb	Jenna Wimshurst	00:15	Active (conference)/Not recording
 Jenna Wimshurst	01268508018	00:02	Active (conference)/Not recording

Please note that when leaving a call that you barged into, you must transfer the call parties together in order to leave the conference without ending the original call. To do this either drag

one call on top of the other in the Active Call List, or press Transfer  then select the option to leave the conference, as shown below.

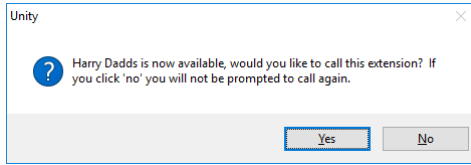


### *Feature Dependency:*

- I. The Desktop user must have directed call pick-up with barge-in service assigned
- II. Monitored user must be engaged on a call
- III. The monitored user must not have the barge in Exempt service active

### 8.5.10 Call Extension When Available

Places an alert on the engaged monitored user. When they become free a dialogue box prompts the Desktop user and allows them to open the call back.

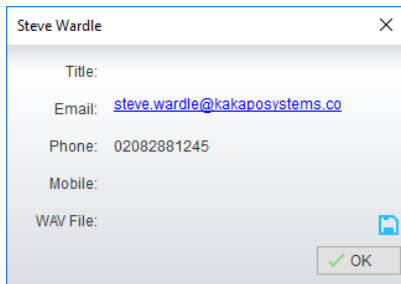


*Feature Dependency:*


- I. Monitored user must be engaged on a call

### 8.5.11 View User Details

Performs a lookup on the user's details as entered in BROADSOFT. This includes their phone number, mobile and email address.



#### 8.5.11.1 Adding Audio Alerts to Monitored Users

The "View user details" box also allows a wav file to be specified that will be played when the monitored user receives a call. Click the  icon to select the wav file then click OK. This feature is useful in Manager/Secretary scenarios where the Desktop user is screening calls. When the audio alert plays that is the reminder for the user to perform call pick-up.


### 8.5.12 Send Email

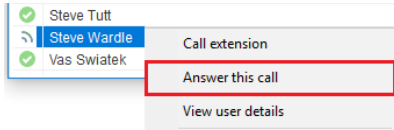
This will open a new email window in the default Email application. The user must have the email filed populated against their name in BROADSOFT.

*Feature Dependency:*

- I. The recipient user must have their email address entered in the system

### 8.5.13 Answer This Call [Call Pick-Up]

When monitored users are ringing their icon in Contacts becomes orange . To perform pick-up and answer the call right click the icon and select “Answer this call”. This option is only displayed when right clicking a ringing user.



#### Feature Dependency:

- I. The Desktop user and the monitored user must be the same pickup group or the Desktop user must have the “Directed Call Pick-Up” service assigned.









## 9 INSTANT MESSAGING

---

Instant messages can be sent and received between any Unity app [Reception, Desktop, Agent, or Supervisor]. Messages sent to offline user [those that do not have an instance of Unity open] can be stored and delivered when the recipient next opens Unity.

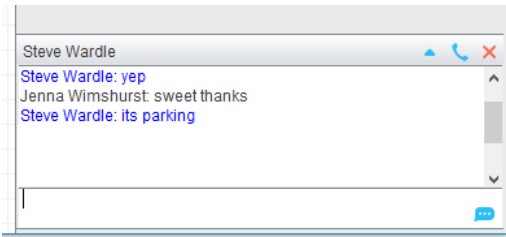
### 9.1 Online/Offline Indicator

A person that is running an instance of Unity, and therefore available to send an online IM to is indicated with a small envelope on their user icon. This applies across all the available, engaged, ringing and DND states as shown below.

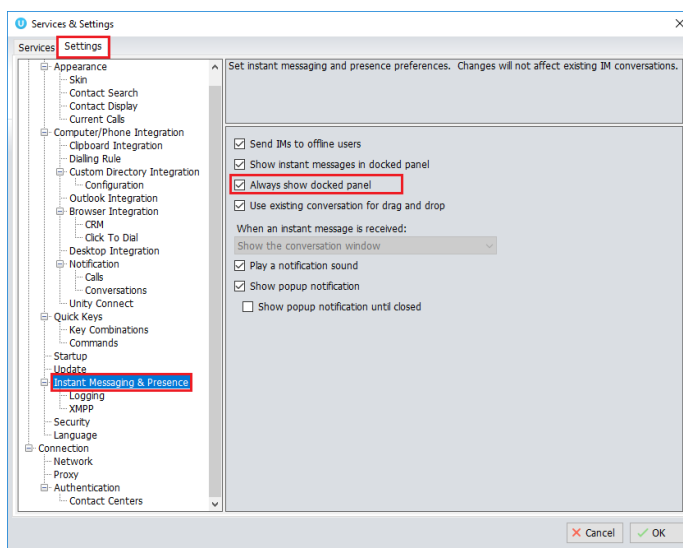
State	Online [Unity Open]	Offline [Unity Closed]
Available		
Ringing		
Engaged		
DND/unavailable profile		

## 9.2 Docking the IM Window


Instant Messages can be displayed in the Docked IM Window or as separate dialogue boxes for each individual IM thread. If the docked window is used IMs can be initiated via drag and drop and new IM windows will not pop over other applications.



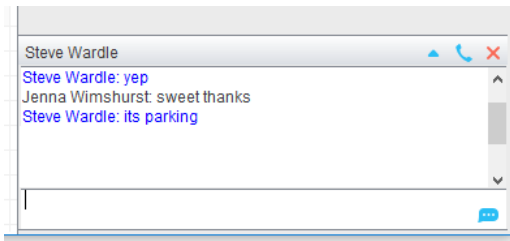
Docking the IM window is specified in Settings > Settings > Instant Messaging and Presence > "Show instant messages in docked panel". Individual IM messages can still be undocked and redocked as required.




## 9.3 Undocking and Redocking IM sessions

You can undock an IM message by clicking the  "Expand conversation to separate window" button. The IM session will now be a standalone window.

## Docked IM



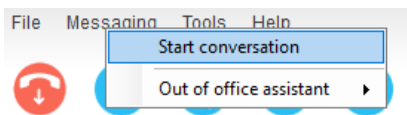
Click the  "Dock conversation in main window" button to pull the IM session back into the docked panel in the main Desktop interface.

## Undocked IM

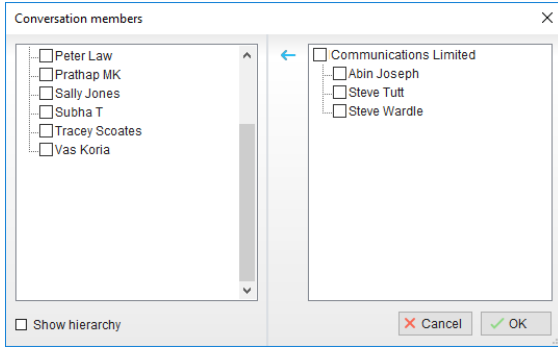


## 9.4 Sending an Instant Message


Send an instant message either by right clicking a user icon in Contacts panel or Search and selecting "Instant Message" from the drop list, or by dragging a user icon into the docked IM panel. Alternatively, you can select Messaging > Start Conversation from the top menu bar.



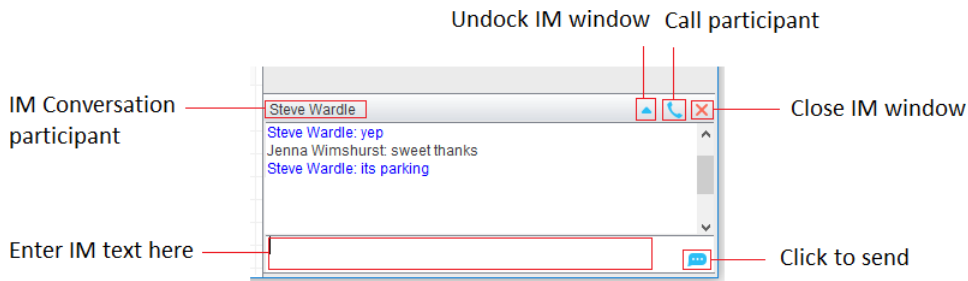
You can then select the users to include in the IM conversation. Please note that only online users will be displayed in the lists. The left list contains all online users, to include them in the IM conversation move them into the right list either by double-clicking the entry or using the arrow button.



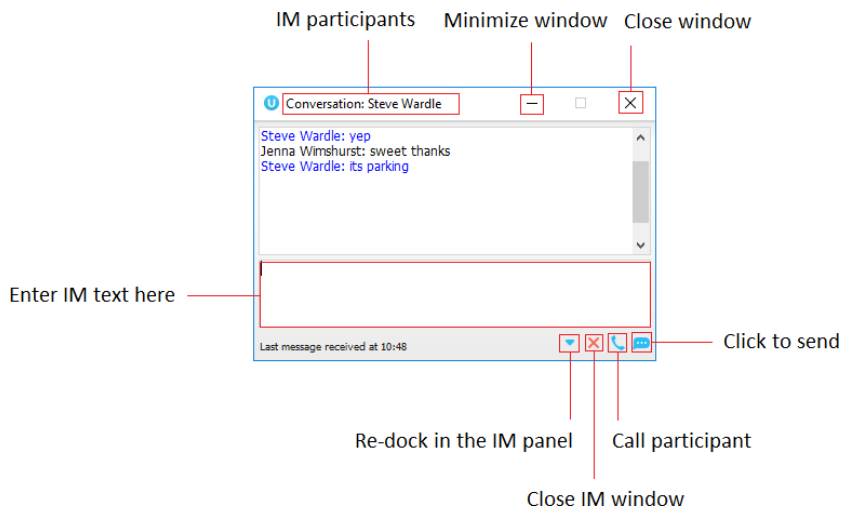
## 9.5 Overview of IM Window

The upper part of the IM window will scroll to display the most recent comment. Type your comment in the bottom window and press Enter or click the  envelope at bottom right.


### IM Window – Docked

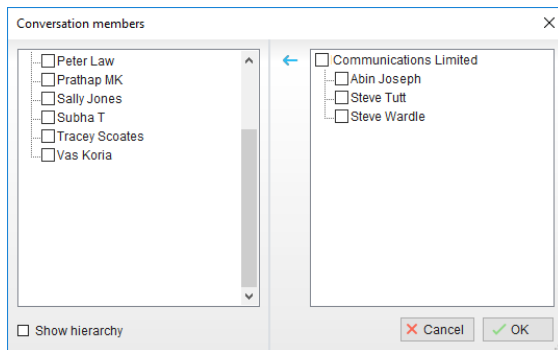


### IM Window – Undocked



## 9.6 Adding Participants to an Existing IM Session

When an IM conversation is in the Docked IM panel you can drag a user icon from the Contacts Panel or Search and drop them on the IM window to add them to the conversation. When the IM Window is undocked you click the  Search icon and select participants to add to the conversation, as below.



## 9.7 Sending Contact Directory Numbers

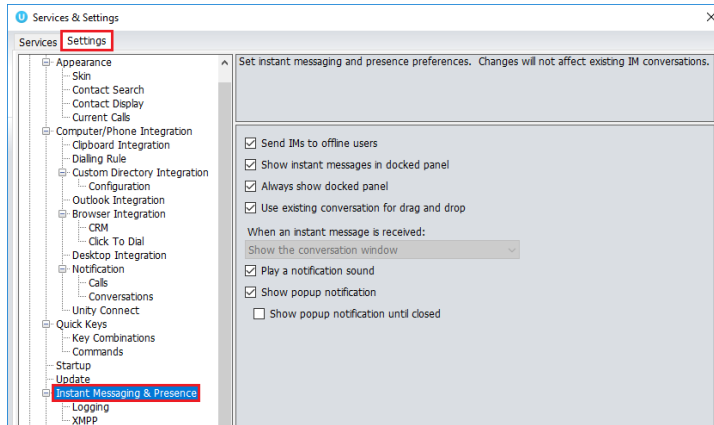
To send another user a number from your Directory right click in the bottom panel where you enter text. Mouse over to see your Directory entries and select the appropriate number.

Feature Dependency:

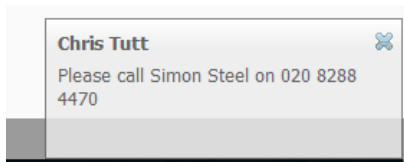
- I. The recipient user must have their email address entered in the system
- II. The Desktop user must have their outlook client open and they must have full sharing Permissions to see the monitored user's Calendar in Outlook

## 9.8 IM Notification Settings

All notification options for IMs, including sound and popup notifications can be found in the settings under Instant messaging & Presence.



Selecting the 'Show popup notification until closed' will keep the IM popup on the screen until it has been closed or clicked.



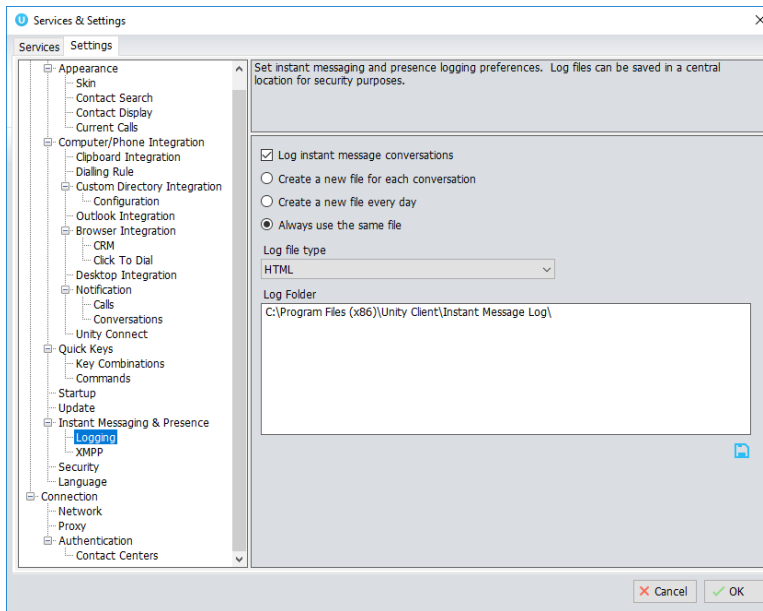
## 9.9 Send IMs to Offline Users

Even when a user is offline, Unity will allow you to send them an instant message which will then be queued and will appear the next time the user is online.

### 9.9.1 Logging IM Sessions

You will find the Instant Messaging and presence logging options in the Settings tab. Here you will be able to configure how IMs are saved, what file type they are (CSV or HTML) and where they are saved, for example, you may want to save IM conversations on your server rather than on the user's local computer.





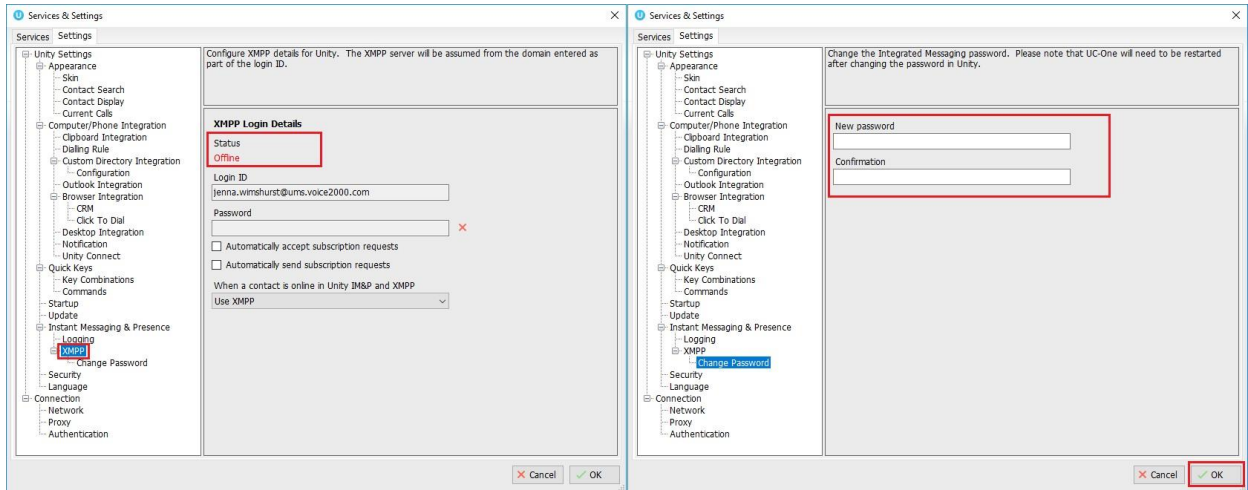
## 9.10 XMPP Integration

Unity provides seamless integration with XMPP in order for Unity users to share instant messaging and presence (IM&P) functionality with UC-One clients. All instant messages are displayed and managed to the user as a docked or undocked IM conversation, regardless of the IM&P platform being used. Only online users in Unity can participate in group chats, group chat is not currently supported with XMPP.

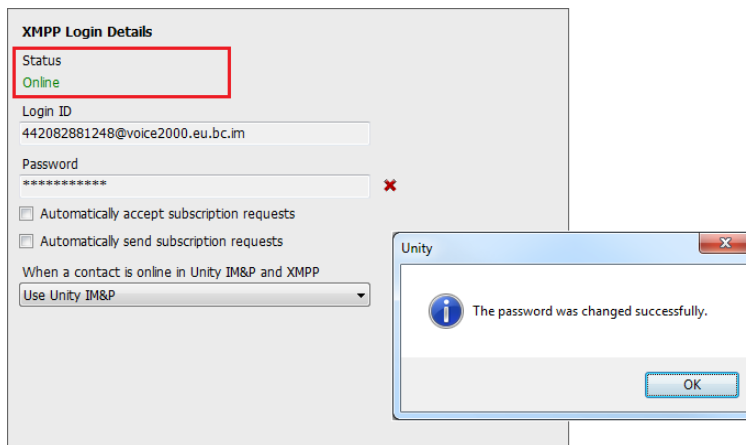
### 9.10.1 XMPP Authentication

Unity is unable to extract the XMPP password from the BroadSoft, meaning it must be reset from within Unity. This functionality relies on the Integrated IM&P service being assigned to the receptionist, although no other UC-One related service need be assigned.

In order to set the XMPP password go into Settings and click on the “XMPP > Change Password” item as shown below. You can see the current XMPP status is offline.

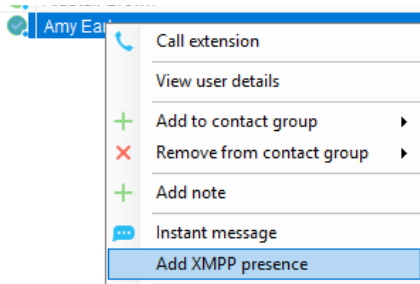


Once the password has been entered you must click the OK button to save the password, before moving to any other panels in settings. Please note that the XMPP password should not be the same as the password used to first log into Unity. You will be notified once the password has been changed and the XMPP status changed to online, as shown below.

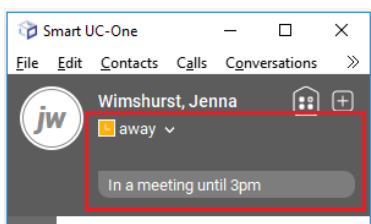


## 9.10.2 Managing XMPP Subscriptions

To subscribe to XMPP presence for a monitored user (meaning the receptionist will receive real-time updates as the monitored user changes their presence in UC-One) simply right-click the user and select “Add XMPP presence”, as shown here. If already subscribed, then right-click the user to remove XMPP presence.



Unity will show the unavailable, busy etc status of the user, as well as any status message manually entered in UC-One, as illustrated below.

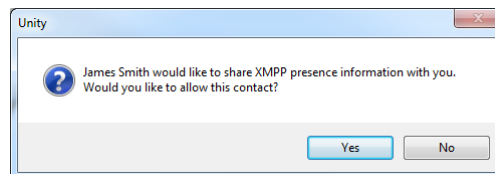
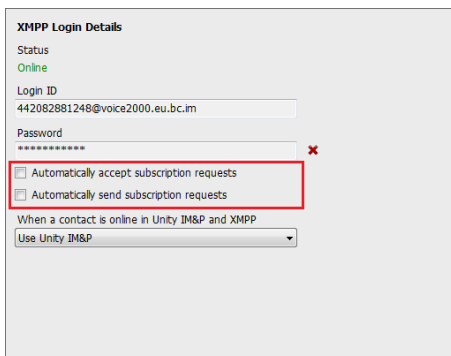


✓	Steve Tutt	02082881251	
✗	Steve Wardle	02082881245	In a meeting until 3pm / Currently away

Please note that at present XMPP is only used by Unity to communicate with UC-One clients.

Unity can be configured to automatically subscribe to all monitored user's XMPP presence, as shown here. However, this may result in the buddy/contact list in UC-One becoming very large so should only be activated if the user often refer to the buddy list.

Unity can also be configured to automatically accept subscription requests from other users, if this setting is not activated then whenever a user subscribes to the user's XMPP presence a prompt will be displayed, as below.



**XMPP Login Details**

Status  
Online

Login ID  
442082881248@voice2000.eu.bc.im

Password  
\*\*\*\*\*

Automatically accept subscription requests

Automatically send subscription requests

When a contact is online in Unity IM&P and XMPP

- Use Unity IM&P
- Use Unity IM&P
- Use XMPP
- Use Both

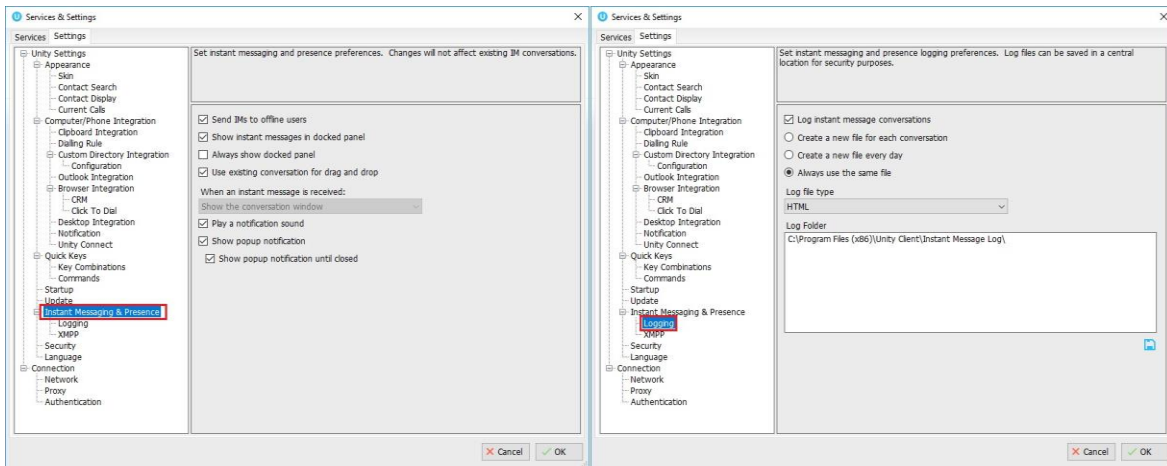
Unity can be configured to automatically generate an XMPP password the first time it is loaded, this is a branding property that is set in the Unity Client branding portal. In this case Unity will save the randomly generated password in BroadSoft and also in the registry, from where it will be used whenever Unity is next started. When the password is reset in BroadSoft it will automatically be updated in the device configuration file for UC-One, if in use. Furthermore, if UC-One is currently in use this will not impact the existing XMPP registration, therefore there is no impact on UC-One.

### 9.10.3 Instant Message Priority


Because a monitored user could be running Unity and UC-One, that user could be available to receive instant messages using either client, or both. In these situations, Unity can be configured to prioritise one IM platform over the other, as shown below.

Options are to only send the instant message using only Unity IM&P meaning the instant message will not be received by UC-One, to only send using XMPP meaning the monitored user's Unity client will not receive the message, or to send through both messaging protocols meaning both clients will receive any instant messages sent from Unity. The last option is the default and is recommended in most scenarios.

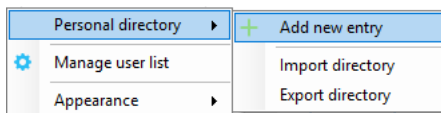
## 9.10.4 Configuration



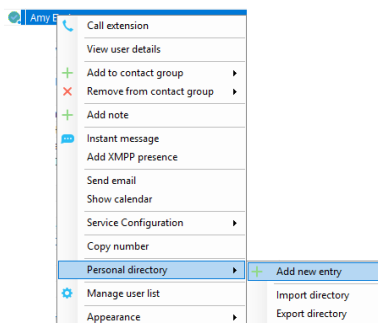
## 10 PERSONAL DIRECTORY

The Personal Directory is a repository on BroadSoft for each user to store personal speed dials. Using this feature in Unity will populate the directory on the host BroadSoft platform. Once numbers have been entered they are available in the Search panel or can be pinned to the main Contacts Panel. A Personal Directory entry is shown by a  icon. Double clicking the icon will make a call to the Directory number. The Personal Directory menu is available when right clicking a monitored user or in the Contacts panel.

### Personal Directory – Right click in Contacts

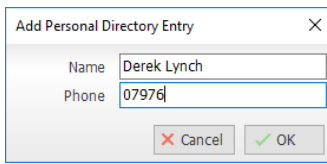


### Personal Directory – Right click on monitored user



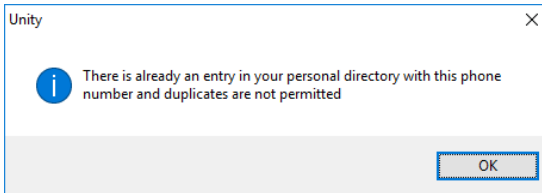
## 10.1 Add New Entry

Enter the Name and Number and click Ok



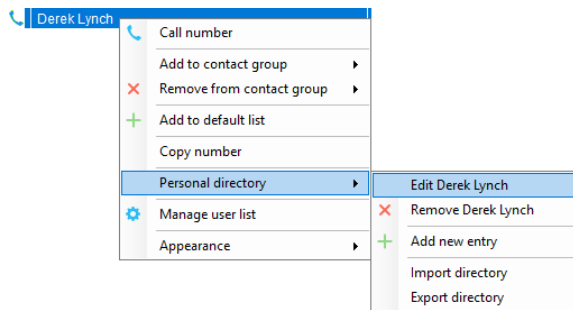
Dialog box titled "Add Personal Directory Entry" with fields for Name (Derek Lynch) and Phone (07976). Buttons for Cancel and OK are visible.

If the number specified is already in the Directory the user will be alerted as below.



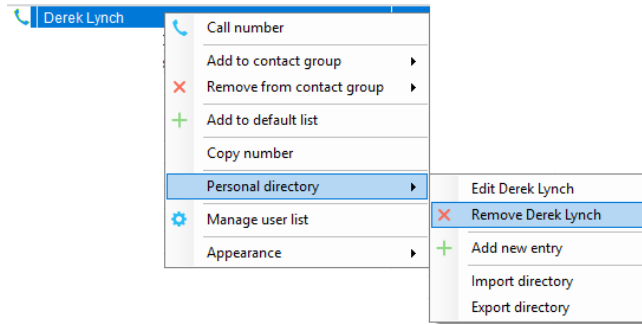
## 10.2 Edit Entry

Use the Search field in Contacts to locate the entry. You can search by either Name or Number. Right click the Entry and select "Edit".



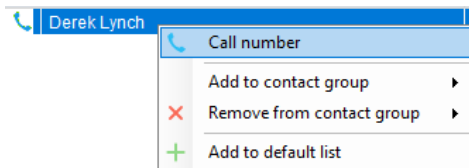
## 10.3 Remove Entry

Use the Search field in Contacts to locate the entry. You can search by either Name or Number. Right click the Entry and select "Remove".



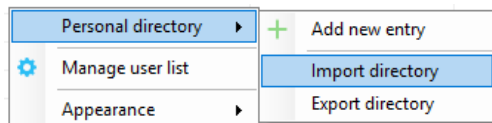
## 10.4 Dialling Directory Entry

Locate the entry either on the Contacts panel or Search. Drag the entry into the Active Call Window or double click to make a call, or right click the entry and click “Call number”.



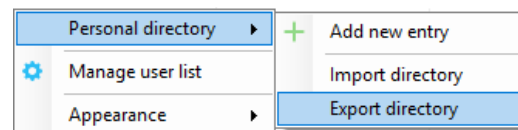
## 10.5 Import Personal Directory

Desktop will allow the user to import a .csv file of directory entries, provided they are in “name, number” format. Right click in the Contacts panel, select “Personal directory > “Import” and then browse to the location of the csv.



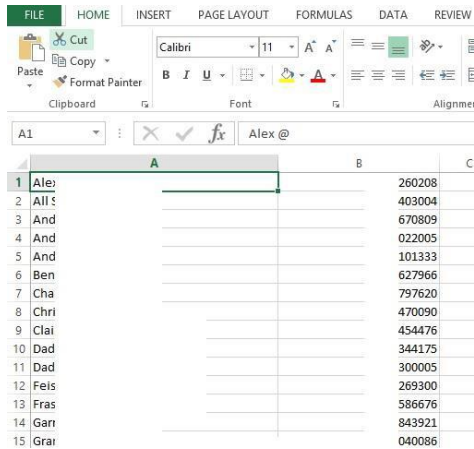
## 10.6 Export Personal Directory

To export Personal Directory entries right click in Contacts and select Personal directory > “export”. You will be prompted to save the file locally. The format is csv and the default file name is PersonalDirectory.csv



Choose save location on local PC.

The format of the csv is Name and then Number. Note the example below is edited for privacy.



## 11 CONTACT SEARCH DIRECTORIES

The Contact Search field combines all BroadSoft and Outlook Contacts directories to create a central search repository. The BroadSoft directories include the Common Phone List [system speed dials], the reception user's own Personal Directory entries, and the Group Directory which includes all the other users in the group as well as hunt groups and auto attendants. Unity can also integrate with third party LDAP [including Microsoft Active Directory] and SQL directories as well as integrating with CRM systems.

Please see your Administrator for a separate guide on using CRM integration.

Directory Owner	Directory Type	Entry Type
<b>BroadSoft</b>	Group Directory	All other users for BLF presence as well as hunt groups and auto attendants
<b>BroadSoft</b>	Common Phone List	Speed dials entries at the Group level
<b>BroadSoft</b>	Personal Directory	The user's own personal speed dial entries
<b>Outlook</b>	Personal Contacts [private folder]	The user's own Outlook Contacts
<b>Outlook</b>	Group Contacts [public folder]	The shared Outlook Contacts at the Outlook group level
<b>Third Party</b>	SQL	External SQL Directory
<b>Third Party</b>	LDAP	External LDAP Directory

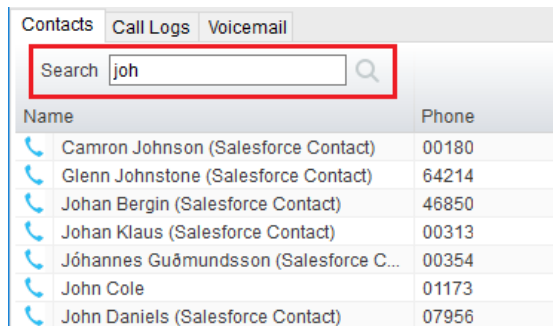


## 11.1 Loading Directories

Unity will load all directory entries into Contact Search on start. If users are added to the BroadSoft Group Directory while Unity is running, they will not be visible until Unity has restarted. Personal directory entries the user adds will be available to use immediately without restarting.

## 11.2 Contact Search Results Layout


To perform a search type characters or numbers in the Search field and Desktop will start dynamically populating a list of matching entries across all directories. The list will narrow as more characters or numbers are entered. Clearing the Search box and returning to the main Contacts panel can be achieved by clicking again in the Search field [provided “Clear the search box when activated” is enabled in Settings as outlined in the section below.



The screenshot shows a software interface with three tabs: 'Contacts', 'Call Logs', and 'Voicemail'. The 'Contacts' tab is active. Below the tabs is a search bar with the text 'joh' and a magnifying glass icon. Below the search bar is a table with two columns: 'Name' and 'Phone'. The table contains seven rows of search results, each starting with a blue telephone handset icon. The first row is 'Camron Johnson (Salesforce Contact)' with phone number '00180'. The second row is 'Glenn Johnstone (Salesforce Contact)' with phone number '64214'. The third row is 'Johan Bergin (Salesforce Contact)' with phone number '46850'. The fourth row is 'Johan Klaus (Salesforce Contact)' with phone number '00313'. The fifth row is 'Jóhannes Guðmundsson (Salesforce C...)' with phone number '00354'. The sixth row is 'John Cole' with phone number '01173'. The seventh row is 'John Daniels (Salesforce Contact)' with phone number '07956'.

Name	Phone
Camron Johnson (Salesforce Contact)	00180
Glenn Johnstone (Salesforce Contact)	64214
Johan Bergin (Salesforce Contact)	46850
Johan Klaus (Salesforce Contact)	00313
Jóhannes Guðmundsson (Salesforce C...	00354
John Cole	01173
John Daniels (Salesforce Contact)	07956

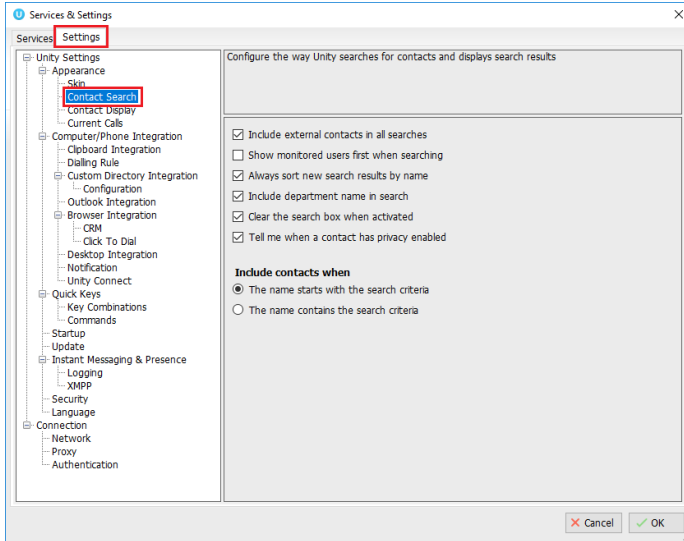
Search results will display each number for a contact as a separate line. Drag or double click the entry to make a call or right click to select a call action from the context menu.

 icons represent external numbers or system resources such as hunt groups for which presence information cannot be displayed.

It is also possible to search on department name to list all users of matching departments.

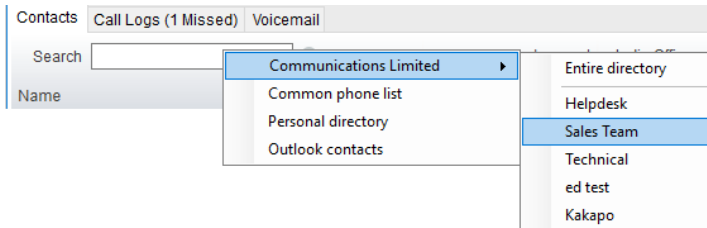
## 11.3 Contact Search Settings

Preferences for Search can be configured in Settings > Unity Settings > Contact Search. The order of search results can also be changed to display internal extension users first and the “Include department name in search” as shown above, can be toggled.



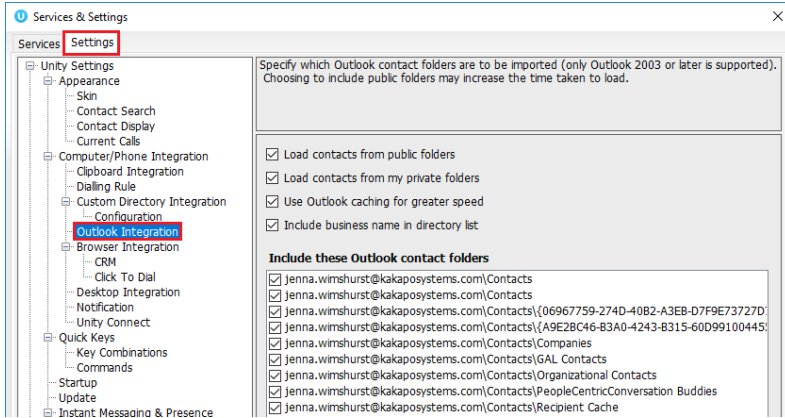
### 11.3.1 Listing Directories

Right-click the search box in the Contact list to view all directories available in Unity, then select the directory to load those contacts in the list, as below.




### 11.4 Configuring Outlook Contacts Preferences

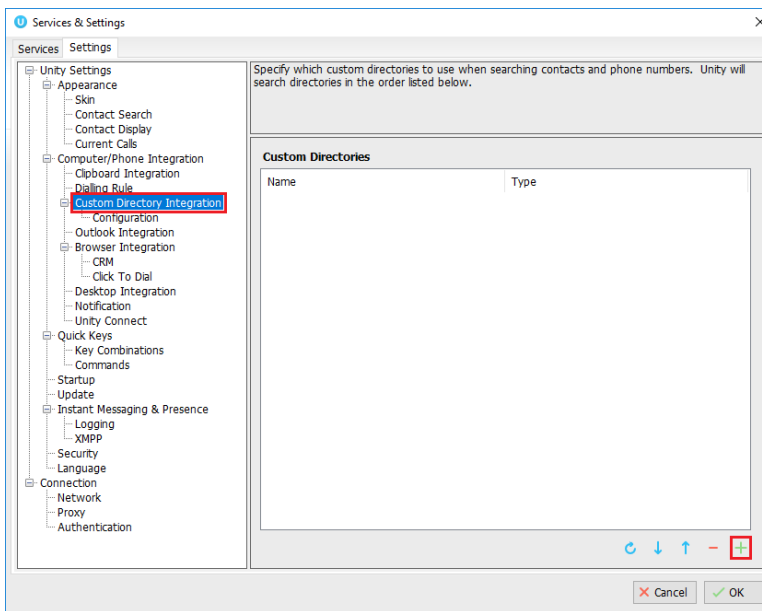
The Outlook directories are both public and private folders and is configurable in Settings > Outlook Integration as below.



## 11.5 Third Party Directories

When searching BroadSoft and Outlook directories, Unity will dynamically match entries as keys are typed. For third party LDAP and SQL directories, because these are not loaded into Unity but polled each time a search request is made, search results are not listed until the Desktop user has entered three characters and hit enter or clicked Search .

Unity includes a wizard to connect to third party SQL and LDAP directories. Go to Settings to add, edit and remove custom directories, as shown below.



## 12 CALL LOGS


The Call Logs tab displays Missed, Received and Dialed Calls in chronological order [although the sort order can be changed by clicking on the column header]. The Call logs tab will show the number of missed calls since Unity was last used, as well as any missed calls received while Unity is running, as shown below.



The screenshot shows the 'Call Logs' tab with three radio buttons: 'Missed calls' (selected), 'Received calls', and 'Dialed calls'. Below the buttons is a table with three columns: 'Call Date', 'Phone Number', and 'Name'. The table contains the following data:

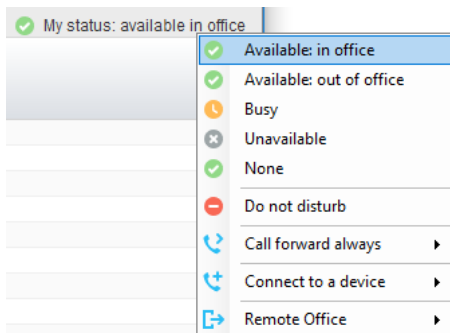
Call Date	Phone Number	Name
19/08/2016 13:46:03	0797	Sally Wainwright
17/08/2016 12:19:04	0139	01392346148
15/08/2016 13:14:02	0797	Sally Wainwright
12/08/2016 13:15:22	1251	Steve Tutt
11/08/2016 16:01:38	1248	Chris Tutt
11/08/2016 12:37:31	0139	01392346148
08/08/2016 16:30:58	0208	02086584270
07/08/2016 18:34:40	0002	Andrew Smith

Drag or double click an entry to make a call to that number or right click to add the number to your personal directory.

Call logs can be exported as a csv file, either individually or together, but clicked the  Export button.

## 13 MY STATUS

The "My Status" link provides an indication of the current status of the user as well as quick access to key services that are regularly modified. Unity will only display the options for the services that have been assigned to the user, available services are CommPilot Express (CPE), Do Not Disturb (DND), Call Forward Always (CFA), Remote Office and Hoteling Guest (for hot-desk environments).



## 13.1 CommPilot Express Profiles

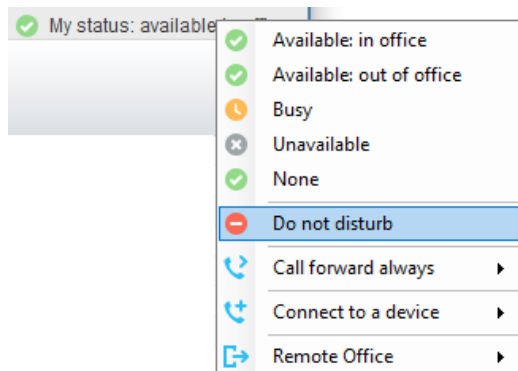
CommPilot Express profiles are used to apply a pre-configured call routing policy based on your current state. CommPilot profiles are also used to convey presence information to other users within the group or enterprise. As users change their CommPilot Express state, any Unity client that is monitoring that user [through the User Status list] will see their image change, as outlined below.

User State	Description	User Status Image
Available: In Office	I am in the office and available to receive calls.	✓
Available: Out Of Office	I am not in the office but am available to take calls	✓
Busy	I am currently busy (short term)	⊖
Unavailable	I am currently unavailable (longer term)	⊖
None	No call routing plan is in use	✓

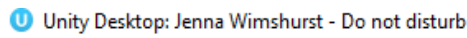
The My Status link will show the current CommPilot Express state, unless overridden by another service activation such as Do Not Disturb or Call Forward Always. To change the current status, click on the My Status link and select the state from the context menu.

## 13.2 Do Not Disturb

To activate Do Not Disturb, click on the My Status link and click the menu option, as shown below.



Unity will show that the user currently has DND activated through the My Status link and the Unity title bar.



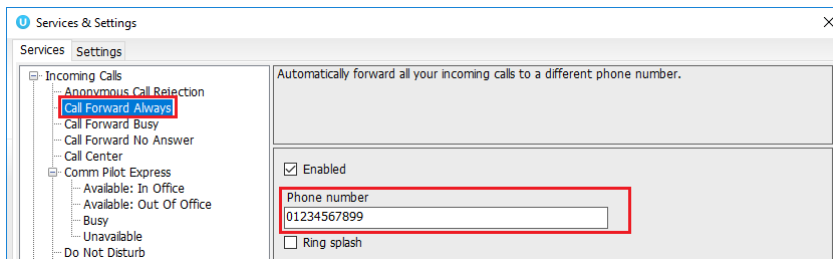
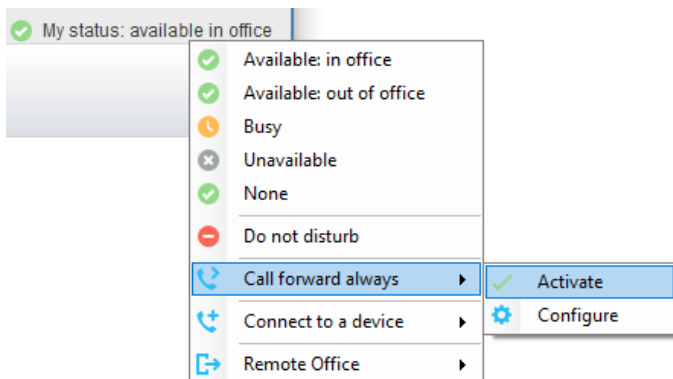
Anyone monitoring the user [in the User Status list] will also see that they currently have Do Not Disturb activated.

Click on the same menu option or a CommPilot Express status to deactivate Do Not Disturb.

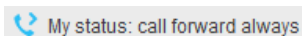
### 13.3 Call Forward Always

All Forward Always will automatically route all incoming calls to the pre-defined phone number, meaning the user's phone will not ring.

To activate this service, click on the My Status link and activate the service as shown below.




Unity will show that the user currently has Call Forward Always activated through the My Status link.



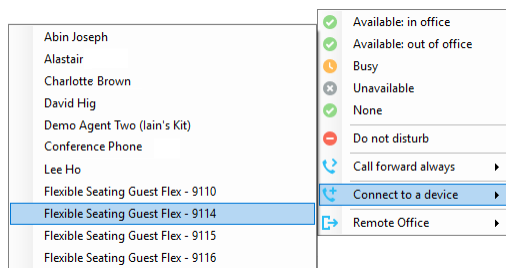
Anyone monitoring the user [in the User Status list] will also see that they currently have Call Forward Always activated, including the forwarding number. If the number is matched to a directory number, then the contact name will be displayed rather than the number.



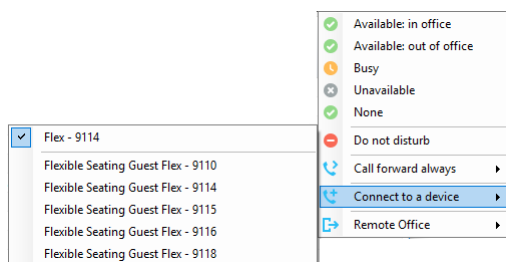
The Call Forward Always service can be deactivated through the My Status link or through Settings .

### 13.4 Hot-Desk and Flexible seating

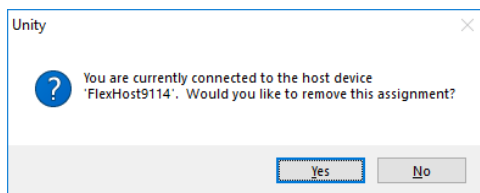
Hoteling Guest allows the user to connect to a device, typically in a hot-desk and flexible seating environment. To attach the user account to a device, select the device from the menu option below. Please note that only available devices [that aren't already in use] will be displayed.



There is no visual notification that the user account is attached to a device, other than if the user clicks in the My Status link, in which case they will see the device is ticked.



When Unity is closing, it will prompt the user to remove the device attachment.



If the user clicks no they will continue to be attached to the device until the association is automatically ceased by the BroadSoft.

### 13.5 Remote Office

Use the My Status link to quickly activate/deactivate the service, or click configure to go directly to that service in Settings.

